

Product Catalog

2020



Animal Care | *Systems*



animalcaresystems.com

7086 S. Revere Parkway, Centennial, Colorado 80112

Email: info@animalcaresystems.com | Phone: 888-827-3861 | Fax: 720-283-0179

with
ALTERNATIVE DESIGN
MANUFACTURING & SUPPLY, INC.



Contents

| | |
|---|----------|
| How it Works..... | 3 |
| Optimice | 5 |
| Rack Assemblies | 6 |
| Rack Options..... | 7 |
| Auto-Water Racks | 8 |
| Cage Assemblies | 9 |
| Cage Options | 10 |
| Blockparty Cages and Cage Options | 11 |
| Blockparty Cage Bases | 12 |
| Blockparty Tubes | 13 |
| Single-Use Caging | 14 |
| Cage Bases/Accessories | 15 |
| Cage Tops & Parts | 16 |
| Cage Filters | 18 |
| Cage Parts & Accessories | 19 |
| Cage Bottles | 20 |
| Water Parts & Accessories | 21 |
| Cage Parts/Feeders | 22 |
| Cage Card Holders & Accessories | 23 |
| Cage Dividers & Tox Floors | 24 |
| Other Accessories | 25 |
| Inhalation Caps & Nozzles | 26 |

| | |
|-----------------------------------|-----------|
| SMART System | 27 |
| Precise Temperature Control | 27 |
| Ergomice | 29 |
| 50-Cage Racks | 30 |
| 70-Cage Racks | 31 |
| 80-Cage Racks | 32 |
| Transport Boxes | 33 |
| Containers | 33 |
| Optirat Plus | 34 |
| Rack Assemblies | 35 |
| Auto-Water Racks | 36 |
| Cage Assemblies | 37 |
| Cage Bases | 38 |
| Cage Tops & Parts | 39 |
| Cage Filter Components | 40 |
| Bottles & Water Accessories | 42 |
| Cage Feeders | 43 |
| Cage Parts & Accessories | 44 |
| Optirat GenII | 46 |
| Rack Assemblies & Options | 47 |
| Auto-Water Racks | 48 |
| Cage Assemblies | 49 |



Contents

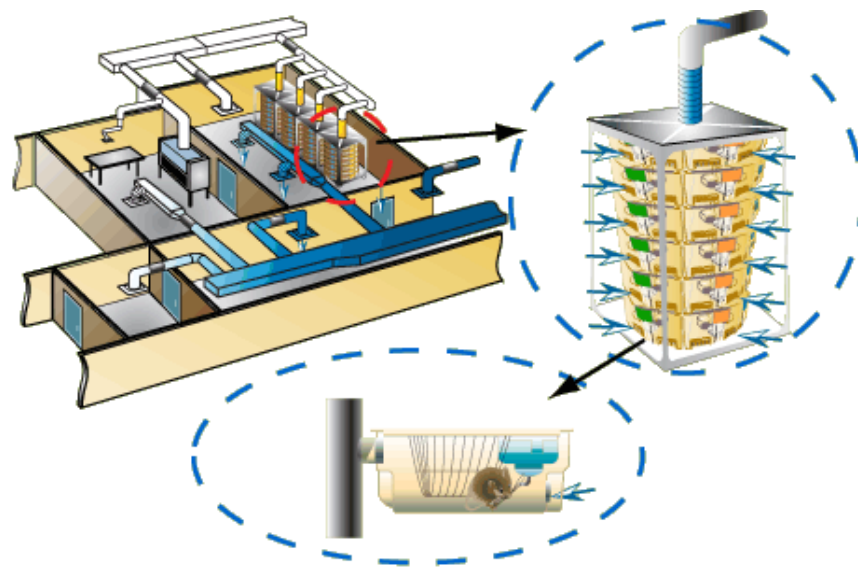
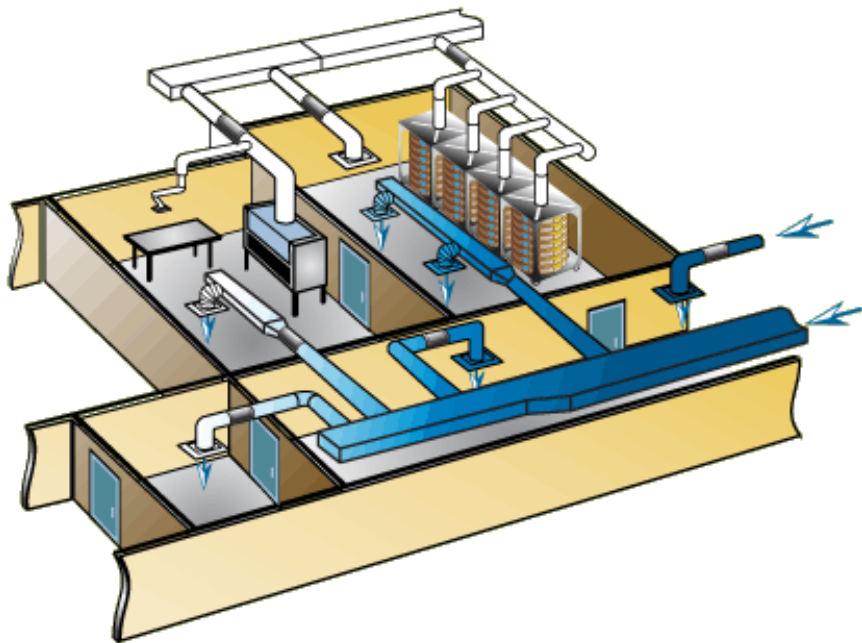
| | |
|--------------------------------------|-----------|
| Cage Bases..... | 50 |
| Cage Tops & Parts | 51 |
| Bottles & Water Accessories..... | 52 |
| Bottle Caps & Auto-Water Parts | 54 |
| Cage Filters | 55 |
| Cage Feeders | 57 |
| Cage Parts & Accessories..... | 58 |
| Material Handling..... | 59 |
| Bulk Trucks..... | 59 |
| Carts & Accessory Baskets | 60 |
| Racks & Tables | 61 |
| Baskets..... | 62 |
| Change-Out Rack | 63 |
| Rack Accessories | 64 |
| Airflow | 64 |
| Miscellaneous..... | 65 |
| Venting & Ducting | 66 |
| Duct Adapter Assemblies | 66 |
| Hose Assemblies & Parts | 67 |
| Flanges & Caps..... | 68 |
| Quatro Air | 69 |



How it Works

For decades, bioresearch facilities have relied on negative air pressure containment to secure and handle the world's most dangerous biological agents. The same principle extends to our exhaust ventilation technology, which uses negative pressure from the animal room exhaust system to draw and filter room air through cages and racks in a one-pass flow pattern, providing superior air quality and complete bioisolation between the cages and surrounding room. This technology eliminates airborne contaminants, including allergens, waste gases, and thermal loads at the cage level. Our caging systems improve and control air quality for animals, personnel, and the environment.

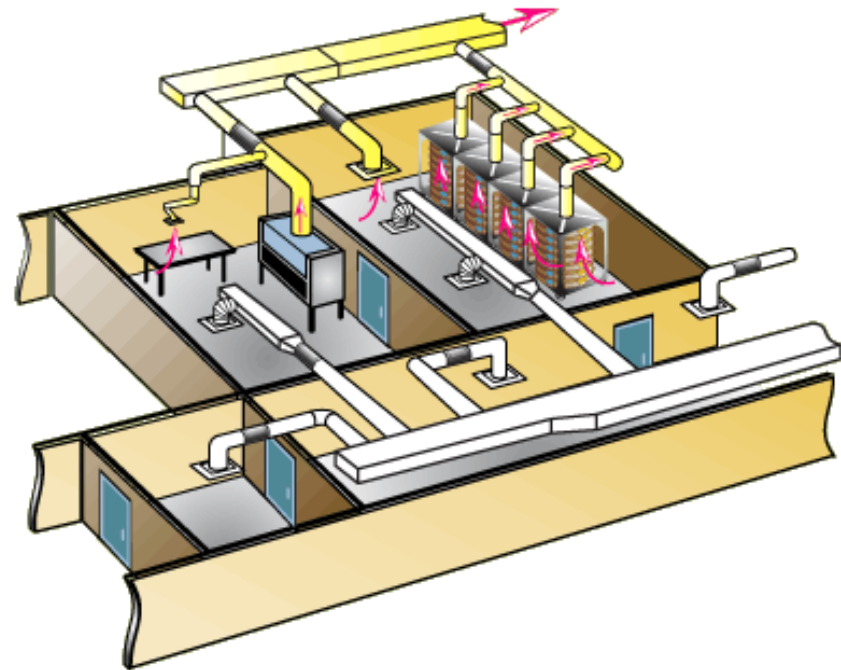
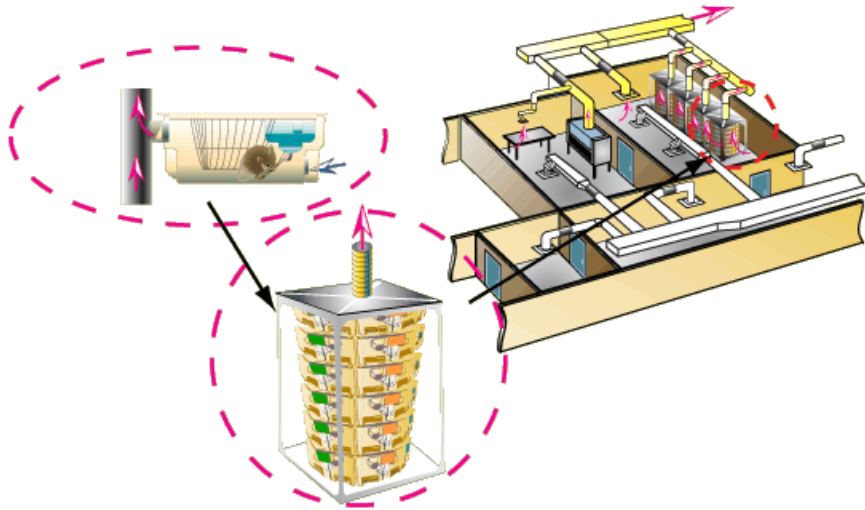
1. Fresh or HEPA-filtered air, represented in blue, is supplied by the building's HVAC system to the animal room.



2. Because the racks are connected to the negatively pressurized exhaust system, this fresh air (blue arrows) is drawn into cages through their inlet filters at the appropriate flow rate to maintain the cage at the same temperature and relative humidity as the room.

How it Works

3. The air then leaves each cage through its rear exhaust filter and passes into the rack's central plenum. Red arrows indicate the various points at which air is drawn into the exhaust system, whether through the animal racks or from the room directly.



4. The building's exhaust system then evacuates this air, represented in yellow, and it is processed and released to the outside.

Because the rack is ventilated by exhaust only, the cages are held at a negative pressure relative to the room, and the central plenum of the rotating carousel is negative relative to the cages. This completely eliminates the possibility of material traveling backward through the air path — a raft never drifts upstream against a river current. This constant but modest negative pressure facilitates a controlled, low-velocity, one-pass airflow pattern free from turbulence and excessive dry-air turnover.

In addition, all Animal Care Systems caging systems achieve a total volume air change within each cage, which results in exceptional air quality for the animals and a highly stable microenvironment.

Highest Cage Density in the Industry

Based on patented direct exhaust ventilation technology, Optimice boasts the highest cage density in the industry, optimizing the density-value equation.

Optimice can be positioned against a wall or next to another rack. By rotating the carousel using conveniently located handles on each platter, cages are easily accessed. There's no need to waste space with large aisles, and no need to move racks for access. Simply stand in one place and bring the cages to you.

Because Optimice creates a low-stress, non-variable environment, it is ideal for housing and breeding research mice and delicate strains. Optimice cages bio-exclude and bio-isolate, and can be used for quarantine and biocontainment.

Optimice is simply the best possible system for optimizing space and enhancing the quality of life for animals and their caregivers.

Caging Accessories

We offer a full range of standard and custom accessories designed to optimize our caging systems and maximize the efficacy of lab animal research.

Optimice features

- Small footprint, ultra-high density
- No motors, blowers, noise, or vibration
- Eliminates odors and allergens in the animal room
- Low-stress environment
- Available single-use caging, interchangeable in Optimice racks

Same operating principles as all Animal Care Systems racks

- Complete biocontainment and isolation
- Low-velocity, one-pass airflow with total volume air changes
- Lightweight, easy to maintain
- Simple cage assemblies with as few as three component parts

Optional automatic watering options

- Valve-on-cage (VOC)
- Valve-on-rack (VOR)
- Removable valve-on-rack (RVOR)



Optimice Bare Rack Assembly—No Cages

Product: C77200



Optimice Full Rack Assembly—Standard Cages

Polysulfone: C89100PFF
 Polysulfone Smoke: C89100SFF
 Polycarbonate: C89100MFF

With External Water Bottles:

Polysulfone: C89104PFF
 Polysulfone Smoke: C89104SFF
 Polycarbonate: C89104MFF


Rack Capacity:

10 Platters
 10 Cages/Platter
 100 Cages

Required Floor Space:

11.4 square feet (1.06 square meters)



|  | Optimice Rack | | | | | |
|---|---------------------------|----------------|----------------|-------------------|-----------------------|--------------|
| | Dimensions Inches (mm) | | | | Weight Pounds (kg) | |
| | Depth | Width | Height | Auto-Water Height | Basic | Auto-Water |
| Full rack with card holders | 40.5 (1029) | 40.5 (1029) | 76.5 (1943) | 78.3 (1989) | 613 (278) | 659 (299) |
| Full rack no card holders | 39.7 (1001) | 39.7 (1001) | | | 604 (274) | 650 (295) |
| Empty rack | 33.7 (856) | 39.7 (1001) | | | 326 (148) | 366 (166) |

External Water Bottles

Replaces standard cage tops with external bottle top and C79123 M/P/S bottle assembly.

Polysulfone: C78020PB

Polysulfone Smoke: C78020SB

Polycarbonate: C78020MB

External Water Bags

Replaces standard cage tops with external water bag tops and omits the bottle assemblies.

Polysulfone: C78020PH

Polysulfone Smoke: C78020SH

Polycarbonate: C78020MH

Internal Water Bags

Replaces standard water bottles with polysulfone internal water bag adapter.

Polysulfone: C78021PH

Filtered Cage Tops

Replaces standard cage tops with those containing an additional inlet air filter.

Polysulfone: C78220PFF

Polysulfone Smoke: C78220SFF

Polycarbonate: C78220MFF

Manual Feed Port

Replaces standard cage tops with those equipped with a spring-loaded manual feed port.

Polysulfone: C78231P

Polysulfone Smoke: C78231S

Polycarbonate: C78231M

Surgical Implant Feeder-Bottle Guard

Replaces standard water bottle and feeder with a feeder-bottle guard.

Polysulfone: C78130P

Polysulfone Smoke: C78130S

Polycarbonate: C78130M



Optimice Bare Rack Assemblies

No cages.

With Fixed Rack-Mounted Edstrom Valves

Compatible with C79102(M/P/S)FF Optimice auto-water cages.

Product: C77302

Removable Edstrom Valve Option

Add to above rack to change valves to removable type.

Option: C78120

Ready for Cage-Mounted Edstrom Valves

Compatible with C79101(M/P/S)FF Optimice auto-water cages. Valves not included with rack; all other auto-water provisions included.

Product: C77301

Ready For Cage-Mounted SE Lab Group Valves

Compatible with C79105(M/P/S)FF Optimice auto-water cages. Valves not included with rack; all other auto-water provisions included.

Product: C77305

With Auto-Water, No Valves or Valve Couplings*

Cage compatibility depends on valve selection.

Product: C77602

Optimice Full Rack Assemblies

With Fixed Rack-Mounted Edstrom Valves

Includes C79102(M/P/S)FF Optimice auto-water cages.

Polysulfone: C89302PFF

Polysulfone Smoke: C89302SFF

Polycarbonate: C89302MFF

Removable Edstrom Valve Option

Add to above rack to change valves to removable type.

Option: C78120

With Cage-Mounted Edstrom Valves

Includes C79101(M/P/S)FF Optimice auto-water cages.

Polysulfone: C89300PFF

Polysulfone Smoke: C89300SFF

Polycarbonate: C89300MFF

With Fixed Rack-Mounted SE Lab Group Valves

Includes C79102(M/P/S)FF Optimice auto-water cages.

Polysulfone: C89307PFF

Polysulfone Smoke: C89307SFF

Polycarbonate: C89307MFF

Removable SE Lab Group Valve Option

Add to above rack to change valves to removable type.

Option: C78122

With Cage-Mounted SE Lab Group Valves

Includes C79105(M/P/S)FF Optimice auto-water cages.

Polysulfone: C89305PFF

Polysulfone Smoke: C89305SFF

Polycarbonate: C89305MFF

* Rack is plumbed for auto-water; however, valves/valve couplings must be acquired and installed before the auto-water system can be used.

Optimice Basic Cage Assembly

Includes internal water bottle and standard feeder.

Polysulfone: C79100PFF
Polysulfone Smoke: C79100SFF
Polycarbonate: C79100MFF



Red Optimice Basic Cage Assembly

Available in polycarbonate only.
Includes internal water bottle and standard feeder.

Product: C79100MREDF



Optimice Auto-Water VOC Cage Assembly

Cage-mounted watering valve. Includes standard feeder.

With SE Lab Valve:
Polysulfone: C79105PFF
Polysulfone Smoke: C79105SFF
Polycarbonate: C79105MFF
With Edstrom Valve:
Polysulfone: C79101PFF
Polysulfone Smoke: C79101SFF
Polycarbonate: C79101MFF



Optimice Auto-Water VOR Cage Assembly

Accommodates rack mounted valves (Edstrom or SE Lab; fixed or removable). Includes standard feeder.

Polysulfone: C79102PFF
Polysulfone Smoke: C79102SFF
Polycarbonate: C79102MFF



Optimice Basic Cage Assembly with External Water Bottle

Includes external water bottle and standard feeder.

Polysulfone: C79104PFF
Polysulfone Smoke: C79104SFF
Polycarbonate: C79104MFF



Filtered Cage Top

Replaces standard cage top with one containing an additional inlet air filter. C79070 filter included.

Polysulfone: C78210PFF
Polysulfone Smoke: C78210PFF
Polycarbonate: C78210PFF



Manual Feed Port Top

Replaces standard cage top with one equipped with a spring-loaded manual feed port.

Polysulfone: C78230P
Polysulfone Smoke: C78230S
Polycarbonate: C78230M



External Water Bottle Top

Replaces the standard cage top and water bottle with a top containing a recess for an external water bottle and the necessary C79123 bottle assembly.

Polysulfone: C78240PB
Polysulfone Smoke: C78240SB
Polycarbonate: C78240MB



External Water Bag Top

Replaces standard cage top with one equipped to hold an external water bag and deletes the standard water bottle.

Polysulfone: C78240PH
Polysulfone Smoke: C78240SH
Polycarbonate: C78240MH



Internal Water Bag

Replaces the standard water bottle with the polysulfone internal water bag holder.

Product: C78241PH



Surgical Implant Feeder-Bottle Guard

Replaces standard water bottle and feeder with a feeder-bottle guard.

Polysulfone: C78030P
Polysulfone Smoke: C78030S
Polycarbonate: C78030M



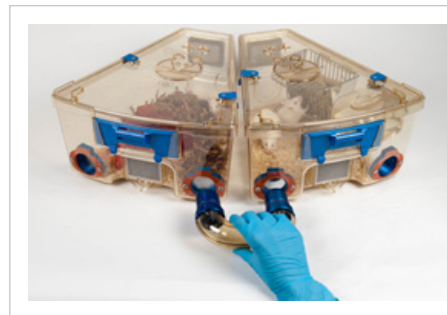
Optimice-Blockparty®

The Blockparty accessory option allows groups of two or more cages within the same level of a rack to be connected to combine living quarters. When the connecting tubes are removed, spring-loaded doors automatically close to block the openings. Available cages are compatible with all styles of Optimice racks.



Blockparty Cage Options

Add an option to the indicated cage or rack assembly to replace the existing cage base with one equipped for Blockparty.



Basic (Bottle or Bag Watering)

Add to C79100(P/S/M)FF complete cage assembly or basic rack assembly.

Product: C78250PBPdff

Basic Red Polycarbonate

Add to C79100MRED complete cage assembly or basic rack assembly.

Product: C78250MREDBPD

Auto-Water Red, Rack-Mounted Valve

Add to C79102MREDDFF complete cage assembly. Use appropriate quantity for auto-water rack assembly with rack-mounted valves.

Product: C78252MREDBPdff

Auto-Water, Rack-Mounted Valve

Add to C79102(P/S/M)FF complete cage assembly. Use appropriate quantity for auto-water rack assembly with rack-mounted valves.

Product: C78252PBPdff

Auto-Water, Cage-Mounted Valve

Add to C79101(P/S/M)FF or C79105(P/S/M)FF complete cage assembly or auto-water rack assembly with cage-mounted valves.

Product: C78251PBPdff

Cage Upgrade

This option will retrofit existing customer cages to Blockparty cages. *(Customer is responsible for shipment of cages to and from the Animal Care Systems warehouse.)*

Product: C79BPUPGRADE

Optimice-Blockparty®

Optimice Blockparty Cage Bases

Cage bases include filters, cage card adapter, and applicable auto-watering provisions. Cage tops, bottles, and feeders (all interchangeable with standard Optimice caging) are not included. Blockparty connecting tubes also must be ordered separately.



Basic Red Polycarbonate

Product: C79110MREDBPDFF

Auto-Water, Cage-Mounted Valve Ready

Cage bases do not include watering valves.

Product: C79111MREDBPDFF



Basic (Bottle or Bag Watering)

Polysulfone: C79110PBPdff

Polysulfone Smoke: C79110SBPDFF

Polycarbonate: C79110MBPDFF

Auto-Water, Cage-Mounted Valve Ready

Cage bases do not include watering valves.

Polysulfone: C79111PBPdff

Polysulfone Smoke: C79111SBPDFF

Polycarbonate: C79111MBPDFF

Auto-Water, Rack-Mounted Valve Ready

Polysulfone: C79112PBPdff

Polysulfone Smoke: C79112SBPDFF

Polycarbonate: C79112MBPDFF



Optimice-Blockparty®

Blockparty Connecting Tube Assemblies

Connecting tubes simply press into ports on cages. A detent locks the connection, and a mildly firm pull releases the connection. Available in amber or red color. Constructed from Radel R and sterilizable.

Amber: C79BP050

Red: C79BP050RED



Individual Blockparty Tube Components

Bare Tube Half

Plastic tube half only; two required per tube assembly.

Amber: C43BP050

Red: C43BP050RED



End Connector

Blue anodized aluminum. Sold individually (two required per tube assembly).

Product: C40BP050



O-Ring

Provides the necessary air-tight seal when tube is installed.

Product: C32BP010



Single-Use Cage Base

Packaged 26 per box.

Product: DBASE2

Single-Use Water Bottle Assembly

Includes bottle and cap; sold 128 per box.

Product: C79722

Bedding

Please contact your local sales representative for more information.

Product: C49100C

Single-Use Docking Tray

Allows a rack to accept single-use caging; trays are reusable.

Product: DTRAY

Single-Use Cage Top Types

Feeders and cage card holders are included with cage tops. Boxes contain 32 of each.

Single-Use Cage Top for Water Bag

Product: DTOP3.HYD

Single-Use Cage Top for Water Bottle

Product: DTOP3.BOT



Basic Cage Base Assembly

Includes cage card adapter kit and filters.

Polysulfone: C79110PFF
Polysulfone Smoke: C79110SFF
Polycarbonate: C79110MFF



Basic Red Cage Base Assembly

Available in polycarbonate only.
Includes cage card adapter kit and filters.

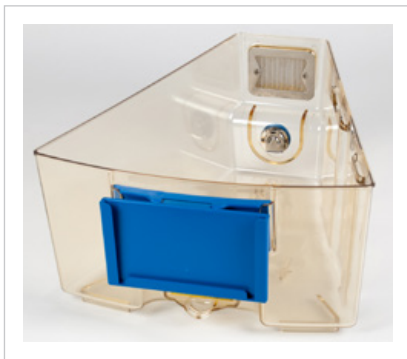
Product: C79110MREDF



Auto-Water Cage Base Assembly

Accommodates rack-mounted water valves. Includes cage card adapter kit and filters.

Polysulfone: C79112PFF
Polysulfone Smoke: C79112SFF
Polycarbonate: C79112MFF



Optimice Auto-Water Pre-charge Station

Purge trapped air from cage-mounted valves before use.

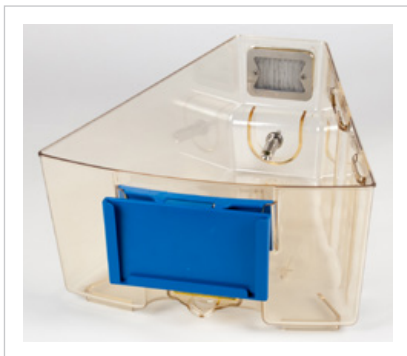
Edstrom Product: C79360
SE Lab Product: C79365



Auto-Water Cage Base Assembly

For cage-mounted water valves; valves provided separately. Includes cage card adapter kit and filters.

Polysulfone: C79111PFF
Polysulfone Smoke: C79111SFF
Polycarbonate: C79111MFF



Optimice Cage Base Skid

Placed at the bottom of a stack of cages, the cage skid enables sliding short cage stacks across floors; for tall stacks, the bulk cart is recommended.

Product: C79390



Compatible Valves

Edstrom Product: M45050
SE Lab Product: C45021

Standard Cage Top Assembly

Polysulfone: C79290P
 Polysulfone Smoke: C79290S
 Polycarbonate: C79290M



Standard Red Cage Top Assembly

Available in polycarbonate only.
 Product: C79290MRED



External Water Bag Cage Top Assembly

C79280 cage top plug available upon request.

Polysulfone: C79290PH
 Polysulfone Smoke: C79290SH
 Polycarbonate: C79290MH



External Water Bottle Cage Top Assembly

Accommodates C79123 water bottle.

Polysulfone: C79290PB
 Polysulfone Smoke: C79290SB
 Polycarbonate: C79290MB



Filtered Cage Top Assembly

Standard cage top equipped with an additional inlet air filter.

Polysulfone: C79290FPFF
 Polysulfone Smoke: C79290FSFF
 Polycarbonate: C79290FMFF



Wire Bar Cage Top Assembly

Allows a standard cage to ventilate statically. Do not use on cages installed in Optimice rack.

Product: C79295



Manual Feed Port Cage Top

Equipped with a spring-loaded manual feed port.

Polysulfone: C79292P

Polysulfone Smoke: C79292S

Polycarbonate: C79292M



Optimice Cage Top Clip

Replacement latching clips, sold as individual.

Product: C43170

Replacement screws: C30120



Inhalation Cage Top Assembly

Allows for controlled introduction of various gas compounds.

Product: C79400



Optimice Flat Filter Assembly

Product: C79070



Filter Flange

Product: C40135

Filter Seal Clip

Product: C79070SLCG
with

Filter Seal

Product: C79070SEAG



40 Mesh Screen

Product: C79070S40

Reemay Filter Media

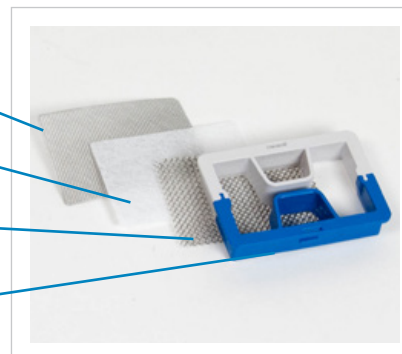
Product: C79070FLT

16 Mesh Screen

Product: C79070S16

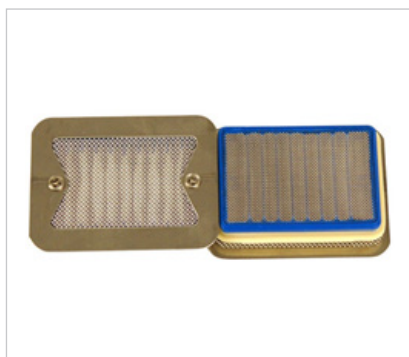
Filter Retainer

Product: C79070RET



Optimice Pleated Filter Assembly

Product: C79073



Flat Filter Table Top Fixture Kit

Includes 1 table top fixture with clamps,
2 press tools, 1 pair pliers

Product: C79070TTF1

Metering Bottle and Holder Assembly

Includes two (2) autoclavable metering bottles and holder.

Product: C79125

Metering Bottle Only

Autoclavable

Product: C79135



Optimice Double Water Bag Holder for Divided Cage

Double water bag holder made from stainless steel with polycarbonate windows to easily view water levels. Holds two 250-mL water bags. Compatible with both polycarbonate and stainless steel dividers.

Product: C79336



Light-sensitive Bottle and Holder Assembly

Includes two (2) light-sensitive bottles and one holder; bottle *not* autoclavable.

Product: C79125A

Light Sensitive Bottle Only

Product: C79135A

Optimice Bottle Hanger

Product: C40320



Optimice Internal Water Bag Holder Assembly

Available in polysulfone only.

Product: C79126



Optimice Internal Bottle Assembly

Includes hanger and cap.

Capacity: 400 mL

Polysulfone: C79122P

Polysulfone Smoke: C79122S

Polycarbonate: C79122M

Bottle without Cap

Polysulfone: C79132P

Polysulfone Smoke: C79132S

Polycarbonate: C79132M



Optimice External Bottle Assembly

Includes hanger and cap.

Capacity: 400 mL

Polysulfone: C79123P

Polysulfone Smoke: C79123S

Polycarbonate: C79123M

Bottle without Cap

Polysulfone: C79132P

Polysulfone Smoke: C79132S

Polycarbonate: C79132M



Black Bottle Assembly

Available in polysulfone only.

Includes hanger and cap.

Capacity: 400 mL

Product: C79122PBLK

Bottle without Cap

Product: C79132PBLK



Red Bottle Assembly

Available in polysulfone only.

Includes hanger and cap.

Capacity: 400 mL

Product: C79122PRED

Bottle without Cap

Product: C79132PRED



Optimice Bottle Seal

Product: C41050



Standard Internal Bottle Cap

Product: C40150



Ball Sipper Tube Bottle Cap

Ball provides a better seal with fewer incidental drips.

Product: C40153



External Bottle Cap

Allows bottles to fit the external bottle cage top.

Product: C40152



Watering Valves, Rack-Mount Removable

Valve: C45027A

Air Seal: C45160

Watering Valves, Cage-Mount

Edstrom: M45050

SE Lab: C45021



Edstrom Auto-Water Deprivation Cap

Product: M45055



Optimice Standard Feeder

All stainless with scruffing grid.
Capacity: 510 cubic centimeters (31 cubic inches)

Product: C40101SG



Optimice Large Capacity Feeder

Capacity: 721 cubic centimeters (44 cubic inches)

Product: C40103

With Scruffing Grid

Product: C40103SG



Optimice High Clearance Feeder

Provides increased clearance between feeder bottom and cage floor.

Product: C40106



Optimice J-Feeder

For powdered or fine pellet feed.
Capacity: 500 cubic centimeters (30 cubic inches)

Product: C40180



Surgical Implant Feeder-Bottle Guard Assembly

A special trough feeder and water bottle that minimizes the risk of damage to head implants.
Feed capacity: 100 cubic centimeters (6 cubic inches); bottle capacity: 236 mL

Product: C79130



Optimice Feeder Bottom Guard

Guard prevents mice from going under the feeder. Can be used in the standard feeder hanging position or with a Unimice Cage Divider.

Product: C40110



Feeder Guard Only

Product: C40328

Water Bottle Only

Product: C79140

Cage Card Adapter Kit

Includes card holder and adapter.

Product: C79253



Cage Card Holder

Fits standard 3-inch x 5-inch cards.

Product: C43251



Cage Card Adapter

Sterilizable.

Product: C43250



Cage Cards

Five colors available.

2.5-by-5-inch:

C52011

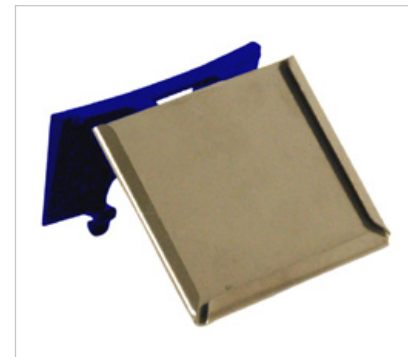
3-by-5-inch:

M52010



Stainless Steel Cage Card Adapter Kit

Product: C79252



Stainless Steel Cage Card Holder

Product: C40252



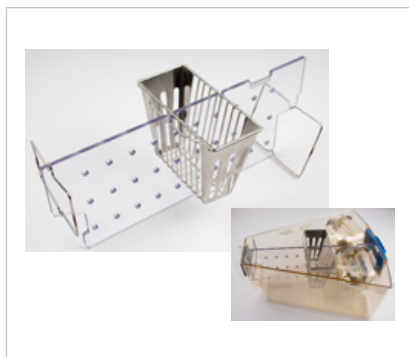
Unimice Polycarbonate Cage Divider Kits

Divide living quarters and food access; includes C40102 feeder. Not for use with auto-water cages. Water bottles must be ordered separately

Standard (shown): C79170M
Tox Floor Compatible: C79172M
Social Holes: C79173M

Individual Component Parts:

Front Clip: C40160
Rear Clip: C40161
Feeder: C40102



Optimice Wire Bar Tox Floor

Large openings for thorough waste isolation.

Product: C40173



Unimice Stainless Steel Cage Divider Kit

Divide living quarters and food access; includes C40104 feeder. For use with auto-water cages or water bottles. Water bottles must be ordered separately.

Standard: C79171
Standard*: C79174
Social Holes: C79171SOC
Social Holes*: C79174SOC

*For use without bottle



Unimice Universal Stainless Steel Cage Divider

Compatible with auto-water; one water bottle must be present. Does not include feeder.

Standard: C40331
Social Holes: C40331
Feeder: C40104
Non-Auto-water: C40336

Optimice Standard Tox Floor

Stamped from flat sheet, more gentle on feet.

Product: C40170



Optimice Cage Top Prop

Suspends open cage top to avoid contamination from setting down.
Dimensions (L x W x H): 12 x 14.25 x 11 inches (30.5 x 36.2 x 28 cm)

Product: C61030



DomicelSLE

3-inch-high, polycarbonate construction; sterilizable.

Single Product: C43810

Box of 50: C43810-50

Box of 250: C43810-250



Gas Alert Extreme Single Gas Detector for NH3

Product: C79NH3KIT1



Front Nozzle

Use with rear cap or rear nozzle.

Product: C7907FN



Rear Nozzle

Use with front cap or front nozzle.

Product: C7907RN



Rear Cap

Use with front nozzle or with front cap and inhalation cage top.

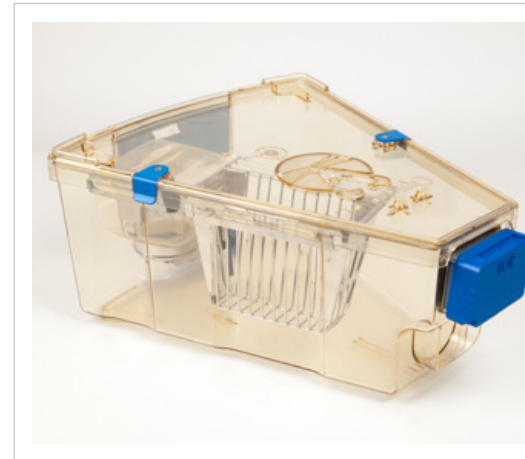
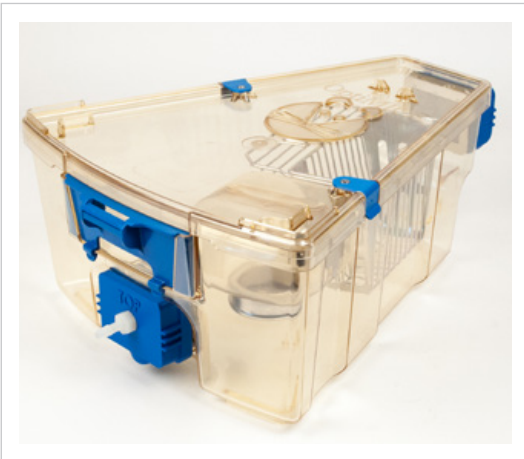
Product: C7907RC



Front Cap

Use with rear nozzle or with rear cap and inhalation cage top.

Product: C7907FC



SMART System

The SMART System offers heated comfort under a portion of the cage floor.

The mice thermoneutral zone is between 26 and 34 degrees Celsius; however typical housing rooms are kept between 21 and 26 °C. Cold-stressed mice develop dramatic changes in physiology, behavior, and immune function and skew experimental results.

Robust mice cope by using nesting material, but many mice benefit from having thermal support.

Like our other carousel-style racks, the SMART System can be positioned against a wall or next to another rack. The rotating carousel provides easy cage access without moving racks or forming large aisles. Simply stand in one place, and bring the cages to you. The SMART System.

Caging Accessories

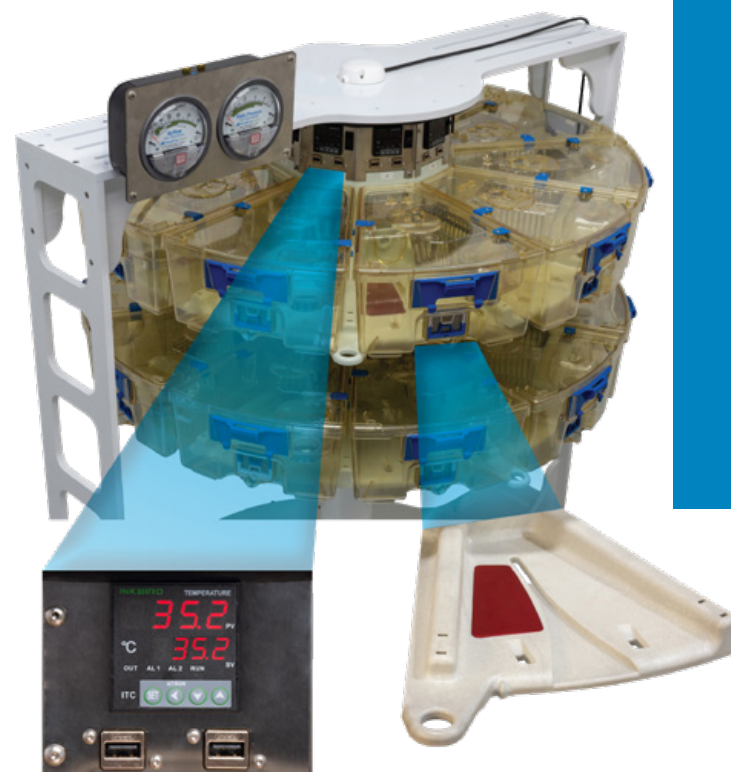
We offer a full range of standard and custom accessories designed to optimize our caging systems and maximize the efficacy of lab animal research.


SMART System features

- Precise temperature control
- Self-selected thermal comfort
- No more unsafe solution
- Stress reduction in animals
- Uses existing Optimice cages

SMART System has the same operating principles as all Animal Care Systems racks

- One-pass, low-velocity airflow and total volume air changes
- No electric motors, no vibration
- Complete biological isolation and containment



|  | SMART System | | | |
|---|-------------------|-------------------|--------------------|--------------------|
| | Dimensions | | | |
| | Depth in. (mm) | Width in. (mm) | Height in. (mm) | Weight lbs (kg) |
| Full rack with flagged cards | 43.75 (1110) | 48.75 (1240) | 50.44 (1280) | 210 (95) |
| Full rack with card holders | 40.5 (1030) | 48.75 (1240) | | |
| Empty rack | 32.75 (830) | 48.75 (1240) | | 166 (76) |

SMART System

SMART System: cages not included

Product: Smartsys-0100

Includes the following products:

High-temperature 6-foot Flex Hose Assembly

Standard hose shipped with all racks.



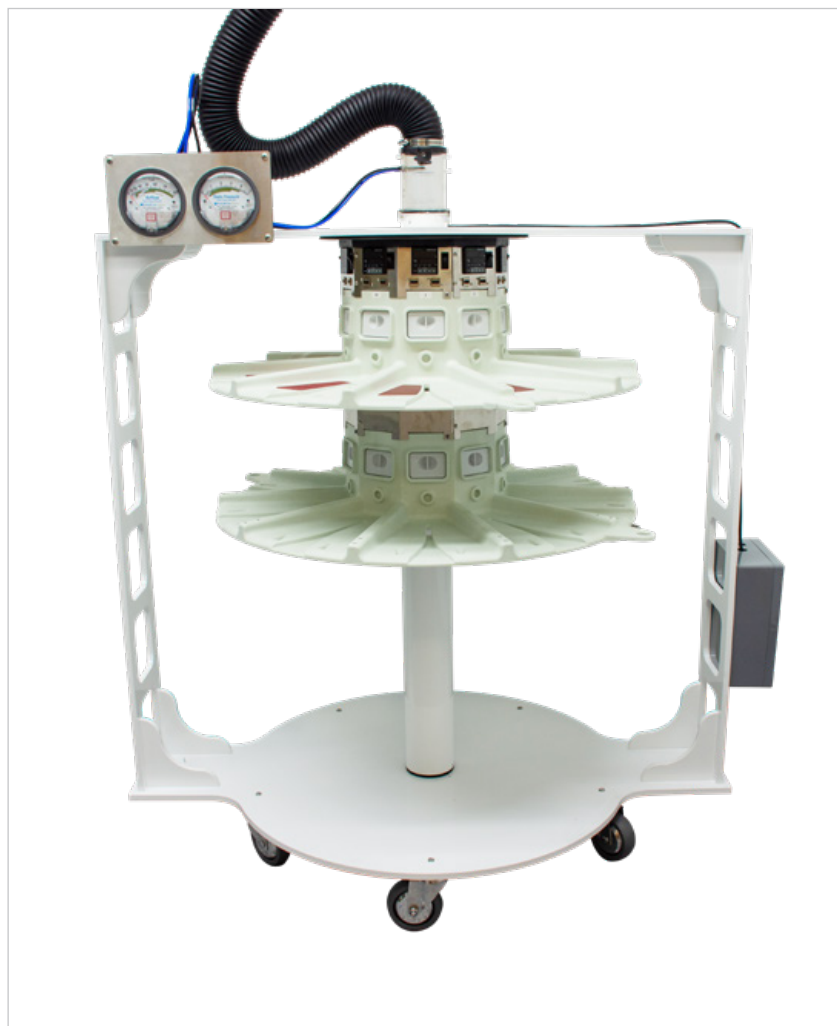
Rack Status Monitor Kit

Install on existing rack for continuous airflow monitoring.



Damper Assembly

Restrict excessive airflow; 3-inch connection (pictured right of rack status monitor)



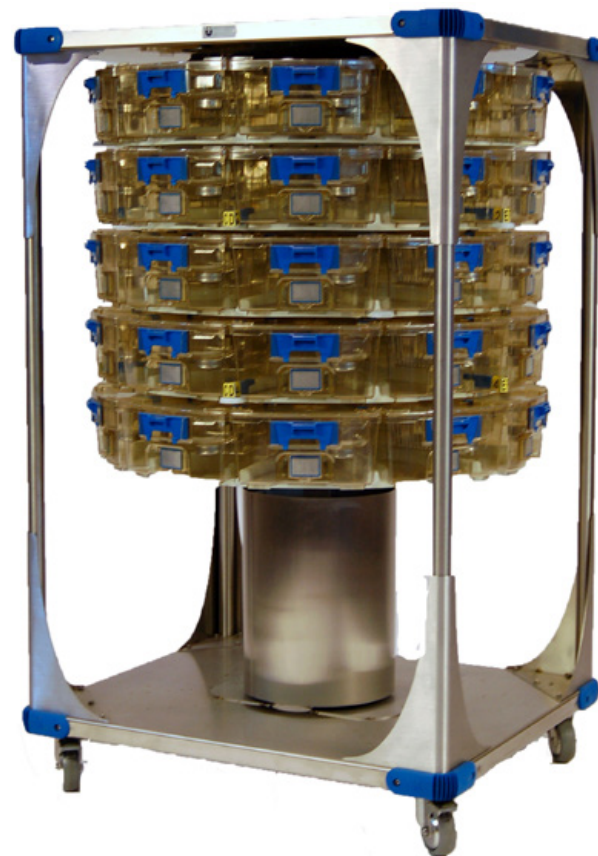
Animal Care Systems' Ergomice provides a compact and ergonomic caging system with all the features and benefits of our Optimice system.

The Ergomice line of racks provides a lightweight, lower-cost alternative to the Optimice caging, and is available in 50-, 70-, or 80-cage capacities. The 70-cage model eliminates the bottom three levels to minimize the need to bend down for access, while the 80-cage model has reduced height to accommodate shorter personnel; the 50-cage model incorporates both of these features but has the lowest animal density.

Ergomice racks use our standard Optimice cages and accessories, which are available in polycarbonate or two types of polysulfone plastic. While the 80-cage configuration has all the same watering options as Optimice, the 50- and 70-cage versions are not available with auto-watering options; bottles and other individual cage watering options are available (external bottles, water pouches, etc.).

Optimice Form and Function, Superior Ergonomics

- No noise or vibration
- Saves energy
- Extremely lightweight
- Easy and comfortable handling and maintenance
- Eliminates allergens and odors
- Low-velocity, one-pass airflow, and total volume air change
- Shares Optimice caging and accessories
- Available in three capacities: 50-, 70-, and 80-cage



Ergomice® 50-Cage

Ergomice 50-Cage Racks

Ergomice Bare Rack Assembly Only

No cages.

Product: C77250

Ergomice Full Rack Assembly

Cages included.

Polysulfone: C89150PFF

Polysulfone Smoke: C89150SFF

Polycarbonate: C89150MFF

Ergomice 50-Cage Rack Options

External Water Bags

Replaces standard cage tops with external water bag tops and omits the bottle assemblies.

Polysulfone: C78025PH

Polysulfone Smoke: C78025SH

Polycarbonate: C78025MH

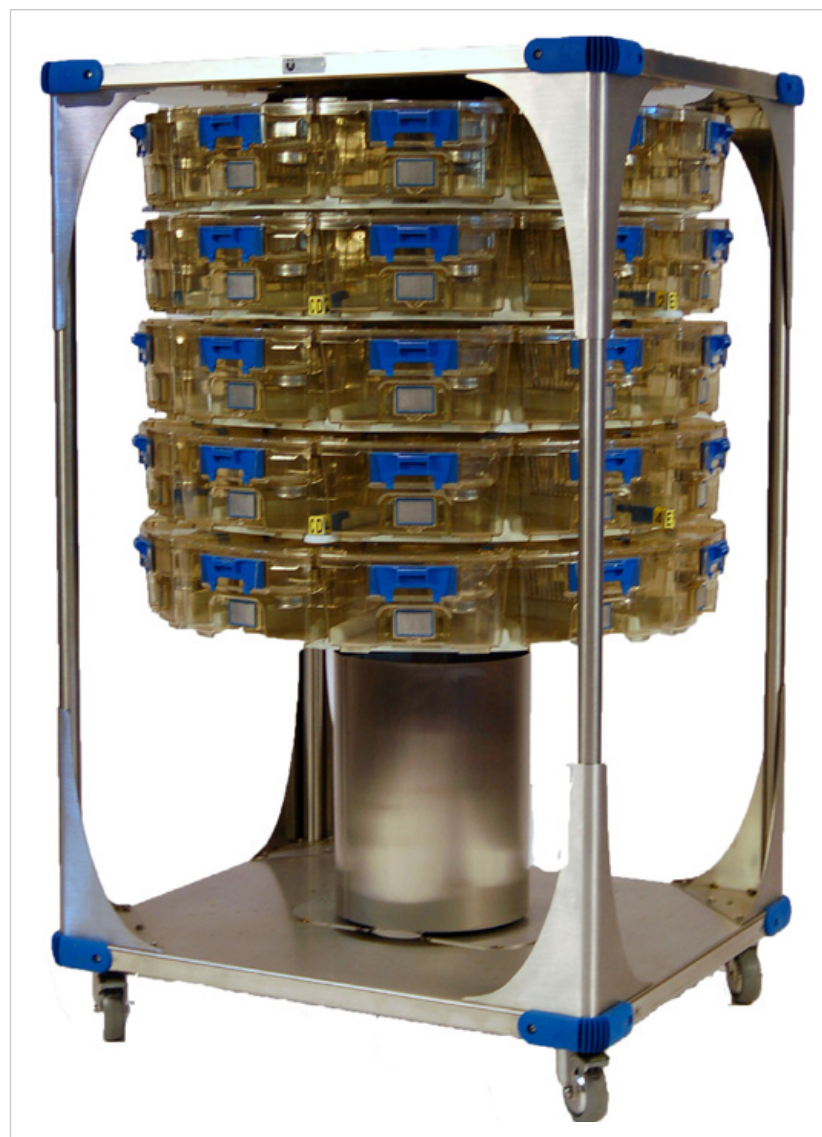
External Water Bottles


Replaces standard cage tops with external bottle top and C79123(P/S/M) bottle assembly.

Polysulfone: C78025PB

Polysulfone Smoke: C78025SB

Polycarbonate: C78025MB



|  | Ergomice 50 Dimensions | | |
|---|------------------------|-----------------|-----------------|
| | Inches (cm) | | |
| | Depth | Width | Height |
| With cages | 40.5 (102.9) | 40.5 (102.9) | 63.9 (162.3) |
| Without cages | 33.8 (85.6) | 39.8 (101.1) | |

All Ergomice racks have four 4-inch swivel casters; two casters have locks

[Back to Table of Contents](#)

Ergomice® 70-Cage

Ergomice 70-Cage Racks

Ergomice Bare Rack Assembly Only

No cages.

Product: C77270

Ergomice Full Rack Assembly

Cages included.

Polysulfone: C89170PFF
Polysulfone Smoke: C89170SFF
Polycarbonate: C89170MFF

Ergomice 70-Cage Rack Options

External Water Bags

Replaces standard cage tops with external water bag tops and omits the bottle assemblies.


Polysulfone: C78027PH
Polysulfone Smoke: C78027SH
Polycarbonate: C78027MH

External Water Bottles

Replaces standard cage tops with external bottle top and C79123(P/S/M) bottle assembly.

Polysulfone: C78027PB
Polysulfone Smoke: C78027SB
Polycarbonate: C78027MB



|  | Ergomice 70 Dimensions | | |
|---|------------------------|-----------------|-----------------|
| | Inches (cm) | | |
| | Depth | Width | Height |
| With cages | 40.5 (102.9) | 40.5 (102.9) | 77.1 (195.8) |
| Without cages | 33.8 (85.6) | 39.8 (101.1) | |

All Ergomice racks have four 4-inch swivel casters; two casters have locks

[Back to Table of Contents](#)

Ergomice® 80-Cage

Ergomice 80-Cage Racks

Ergomice Bare Rack Assembly Only

No cages.

Product: C77280

Ergomice Full Rack Assembly

Cages included.

Polysulfone: C89180PFF

Polysulfone Smoke: C89180SFF

Polycarbonate: C89180MFF

Ergomice 80-Cage Rack Options

External Water Bags*

Replaces standard cage tops with external water bag tops and omits the bottle assemblies.

Polysulfone: C78028PH

Polysulfone Smoke: C78028SH

Polycarbonate: C78028MH

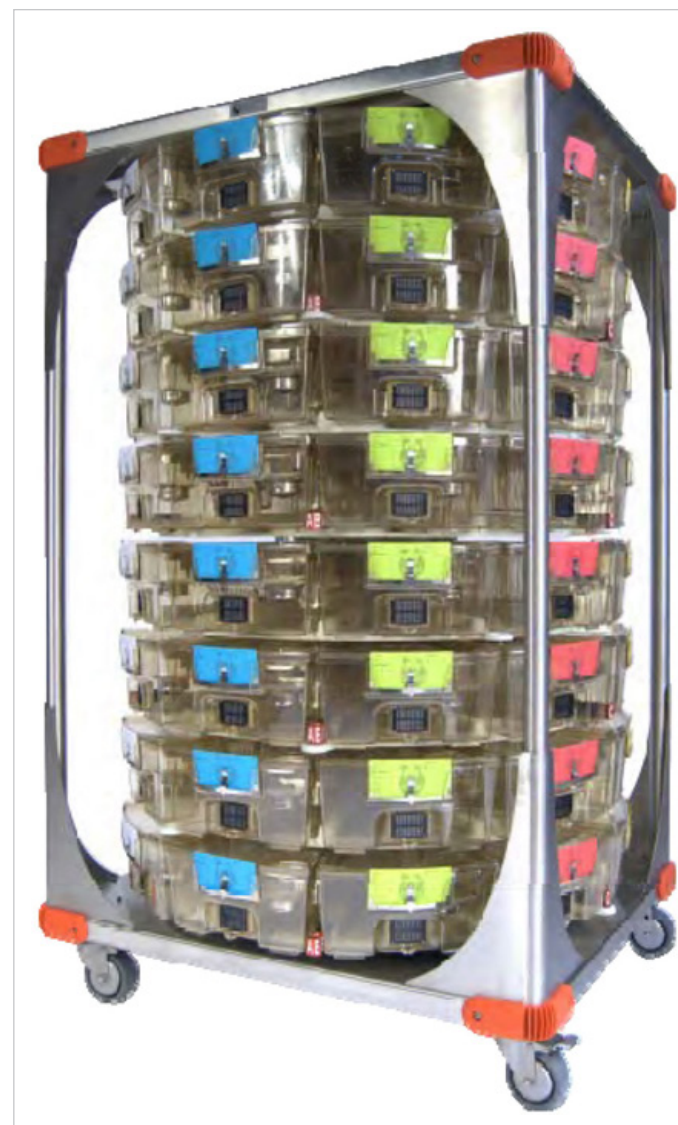
External Water Bottles


Replaces standard cage tops with external bottle top and C79123(P/S/M) bottle assembly.

Polysulfone: C78028PB

Polysulfone Smoke: C78028SB

Polycarbonate: C78028MB



|  | Ergomice 80 Dimensions | | |
|---|------------------------|-----------------|-----------------|
| | Inches (cm) | | |
| | Depth | Width | Height |
| With cages | 40.5 (102.9) | 40.5 (102.9) | 63.9 (162.3) |
| Without cages | 33.8 (85.6) | 39.8 (101.1) | |

All Ergomice racks have four 4-inch swivel casters; two casters have locks

[Back to Table of Contents](#)

Transport Boxes

Animal Care Systems offers ground transport boxes for shipping your research rodents safely and conveniently. These containers are sturdier than cardboard boxes, ship flat, and are economical. Each box can be easily divided and all lids are equipped with a viewing window. For sales outside North America, please contact [Triple A Trading](#).

Features:

- Made from 3-mm white polypropylene Akylux
- Durable, lightweight, reusable, recyclable
- Washable and sterilizable at 121 degrees Celsius (250 F) for 20 minutes
- Easily divide boxes into 2 or 4 compartments
- Filters are protected from animals by a fine wire mesh
- Window flap for easy inspection of animals
- Opaque plastic protects animals from bright light and being viewed in public spaces
- Ships flat, saving on transport costs
- Easy to fold and assemble — no staples or tape needed

Filter Media

Cooltexx 2693, 70 g/m²

Large Box for Rats or Mice

Maximum floor space = 200 square inches (1290 square centimeters). Dividable into 2 or 4 compartments.

Small Box for Mice

Maximum floor space = 100 square inches (645 square centimeters). Dividable into 2 compartments.

Small Transport Box

For rodents. Comes with base divider. Pack of 20.

Product: TPB010

Large Transport Box

For rodents. Comes with base divider. Pack of 20.


Product: TPB020

Large Transport Box Divider

For further division of large box (into quadrants). Pack of 20.

Product: TPBD020



|  | Transport Box Assembled Dimensions | | |
|---|---------------------------------------|---------------|-------------|
| | Inches (cm) | | |
| | Depth | Width | Height |
| Small box | 11.8 (30) | 8.5 (21.5) | 6.3 (16) |
| Large box | 16.9 (43) | 11.8 (30) | 6.3 (16) |

Optirat® Plus

Our Largest, Most Advanced Cages

Optirat Plus combines our proven motor-free, exhaust-ventilated technology and high-density carousel design with vastly increased cage volume while improving ease of use and maintenance. The feeder is located near the rear of the cage for improved visibility, and the water bottles are externally located to allow changing without opening cages. Optirat Plus racks each contain 30 cages, arrayed in six levels of five cages per level, and each cage is equipped with a 1.1-liter feeder and two 500-mL water bottles or optional water bag adapters; auto-watering is also available.

As with all Animal Care Systems racks, Optirat Plus meets domestic and international housing recommendations and exceeds animal comfort guidelines while providing high-density caging for rats. Like our other carousel-style racks, Optirat Plus can be positioned against a wall or next to another rack. The rotating carousel provides easy cage access without moving racks or forming large aisles. Simply stand in one place and bring the cages to you. Optirat Plus also can house hamsters, gerbils, guinea pigs, deer mice, and wild-caught rodents. The cage is suitable for invertebrates, as well.

Caging Accessories

We offer a full range of standard and custom accessories designed to optimize our caging systems and maximize the efficacy of lab animal research.

Optirat Plus features

- Ultra-large cages; improved height and floor area
- Optional mezzanine further expands living space
- Externally accessible water bottles
- Inexpensive replacement filters
- Flat-bottom cage bases
- Integrated cage card holder

Same operating principles as all Animal Care Systems racks

- One-pass, low-velocity airflow with total volume air changes
- No electric motors, no energy consumption, no vibration
- Simple cage assemblies with as few as three component parts
- Complete biological isolation and containment

Optional automatic watering options

- Valve-on-cage (VOC)
- Valve-on-rack (VOR)
- Removable valve-on-rack (RVOR)



Optirat® Plus

Basic Optirat Plus Racks

Water bottles or water bags.

Bare Rack Assembly

No cages.

Product: CP77R100

Full Rack Assembly with Water Bottles

Complete cage assemblies included.

Polysulfone: CP86100P


Polycarbonate: CP86100M†

Full Rack Assembly for use with Water Bags

No water bottles. Includes stainless steel water bag valve, CP45Q100. Includes water bag adapter, CP43T110.

Polysulfone: CP86101P

Polycarbonate: CP86101M†

|  | Optirat Plus Rack | | | | | |
|--|----------------------------------|----------------|--------------|-------------------|------------------------------|--------------|
| | Dimensions <i>Inches (mm)</i> | | | | Weight <i>Pounds (kg)</i> | |
| | Depth | Width | Height | Auto-Water Height | Basic | Auto-Water |
| Full rack, carousel rotation | 41 (1041) | 41 (1041) | 78 (1981) | 79.5 (2019) | 503 (228) | 500 (227) |
| Full rack, carousel rotated for precise entryways | 39.4 (1000) | 39.7 (1008) | | | 503 (228) | 500 (227) |
| Empty rack | 33.7 (856) | 39.7 (1008) | | | 269 (122) | 284 (129) |

†Polycarbonate orders must meet minimum quantities.

All Optirat Plus racks have four 4-inch swivel casters; two casters have locks



Optirat Plus Bare Rack Assemblies

No cages.

With Rack-Mounted Edstrom Valves

Compatible with CP79C202(P/M) Optirat Plus auto-water cages.

Product: CP77R202

Removable Valve Option

Add to above rack to change valves to removable type.

Option: CP75R120

Ready For Cage-Mounted Edstrom Valves

Compatible with CP79C200(P/M) Optirat Plus VOC auto-water cages. Valves not included with rack.

Product: CP77R200

Ready For Cage-Mounted SE Lab Group Valves

Compatible with CP79C205(P/M) Optirat Plus VOC auto-water cages. Valves not included with rack.

Product: CP77R205

With Auto-Water, No Valves or Valve Couplings*

Cage compatibility depends on valve selection.

Product: CP77R20

Optirat Plus Full Rack Assemblies

Cages included.

With Rack-Mounted Edstrom Valves

Includes CP79C202(P/M) Optirat Plus auto-water cages.

Polysulfone: CP86202P

Polycarbonate: CP86202M†

Edstrom Removable Valve Option

Add to above rack CP86202(P/M) to change valves to removable type. Includes CP79C202 M/P Optirat Plus auto-water cages.

Option: CP75R120

With Rack-Mounted SE Lab Group Valves

Includes CP79C202P Optirat Plus auto-water cages.

Product: CP86207P

SE Lab Removable Valve Option

Add to above rack CP86207P to change valves to removable type. Includes CP79C202P Optirat Plus auto-water cages.

Product: CP75R122

With Cage-Mounted Edstrom Valves

Includes CP79C200(P/M) Optirat Plus VOC auto-water cages.

Polysulfone: CP86200P

Polycarbonate: CP86200M†

With Cage-Mounted SE Lab Group Valves

Includes CP79C205(P/M) Optirat Plus VOC auto-water cages.

Polysulfone: CP86205P

Polycarbonate: CP86205M†

†Polycarbonate orders must meet minimum quantities.

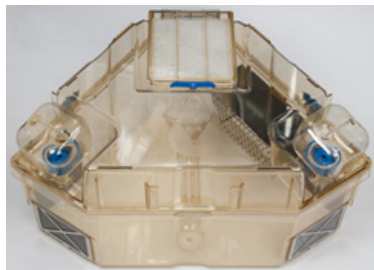
* Rack is plumbed for auto-water; however, valves must be acquired and installed before the auto-water system can be used.

Optirat[®] Plus

Basic with External Water Bottle

Standard Cage Assembly

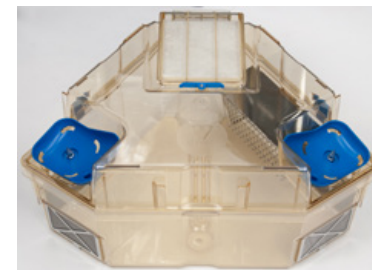
Polysulfone: CP79C100P
Polycarbonate: CP79C100M†



Basic, External Water Bag Ready

Includes stainless steel water bag valves, CP45Q100, and water bag adapters, CP43T110.

Polysulfone: CP79C101P
Polycarbonate: CP79C101M†



Auto-Water Cage Assemblies

Utilize different cage tops with no bottle recesses and provide extra headroom at the front corners.

With Cage-Mounted Valves

With SE Lab Valve:

Polysulfone: CP79C205P
Polycarbonate: CP79C205M†

With Edstrom Valve:

Polysulfone: CP79C200P
Polycarbonate: CP79C200M†



Surgical Implant Cage Assembly

A special trough feeder and angled sipper tubes minimize the risk of damage to head implants.

Polysulfone: CP79C102P
Polycarbonate: CP79C102M†



Accommodates Rack-Mounted Valves

Polysulfone: CP79C202P
Polycarbonate: CP79C202M†

†Polycarbonate orders must meet minimum quantities.

Optirat[®] Plus

Basic Cage Base Assembly

Standard cage base for use with water bottles or bags.

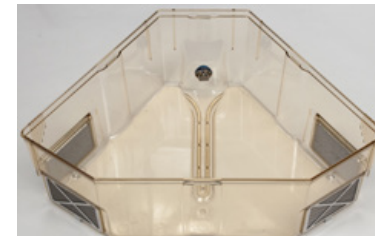
Polysulfone: CP79B100P
Polycarbonate: CP79B100M†



Auto-Water Cage Base Assembly, Rack-Mounted Valve

Spring-loaded door accommodates fixed and removable rack-mounted valves.

Polysulfone: CP79B202P
Polycarbonate: CP79B202M†



Auto-Water Cage Base Assembly, Cage-Mounted Valve

Cage bases can be sold with or without watering valves installed.

With SE Lab Group Valve:

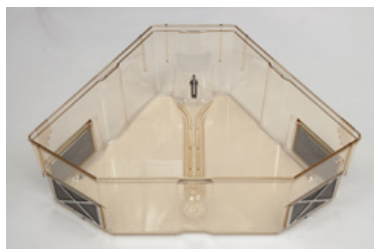
Polysulfone: CP79B205P
Polycarbonate: CP79B205M†

With Edstrom Valve:

Polysulfone: CP79B200P
Polycarbonate: CP79B200M†

Base Without Valve:

Polysulfone: CP79B210P
Polycarbonate: CP79B210M†



Cage-Mounted Watering Valves

For use with CP79B210 cage bases.

Edstrom: M45050
SE Lab: C45021

†Polycarbonate orders must meet minimum quantities.

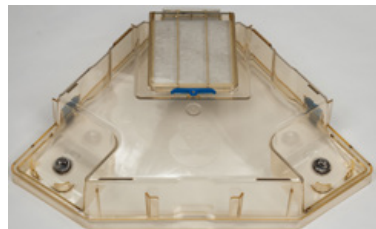
Optirat® Plus

Basic Cage Top Assembly For Water Bottles/Bags

Does not include bottles or water bag adapters.

Polysulfone: CP79T100P

Polycarbonate: CP79T100M†

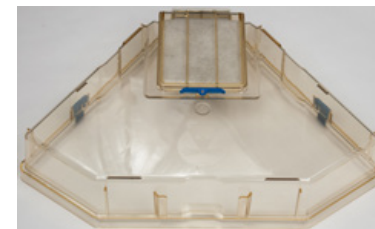


Auto-Water Cage Top Assembly

No recesses for bottles or water bags.

Polysulfone: CP79T200P

Polycarbonate: CP79T200M†



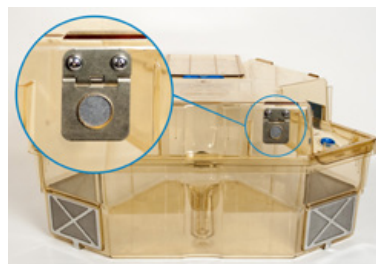
Manual Port Cage Top

Equipped with a spring-loaded manual feed port.

Optirat Plus Single Feed Port Standard Top (Shown)

Polysulfone: CP79T105P

Polycarbonate: CP79T105M†



Optirat Plus Dual Feed Port Standard Top

Polysulfone: CP79T106P

Polycarbonate: CP79T106M†

Optirat Plus Single Feed Port Auto-Water Top

Polysulfone: CP79T205P

Polycarbonate: CP79T205M†

Optirat Plus Dual Feed Port Auto-Water Top

Polysulfone: CP79T206P

Polycarbonate: CP79T206M†

Optirat Plus Cage Top Clip

Sold individually.

Product: CP43T010



†Polycarbonate orders must meet minimum quantities.

Optirat[®] Plus

Filter Media—Reemay 2024

Front Filter

Small, four per cage.

Product: CP43L101



Rear Filter

Large, one per cage.

Product: CP43L102



Rear Screen Clip

Product: CP40L106



Outer Filter Screens

Front Outer Filter Screen

Product: CP40L102



Rear Outer Filter Screen

Product: CP40L105



Optirat® Plus

Inner Filter Screens

Front Inner Filter Screen

Product: CP40L101



Rear Inner Filter Screen

Product: CP40L104



Front Filter Retainer

Product: CP40L103



Optirat Plus Rear Filter Cover

Product: CP43T050 M/P

Polysulfone: CP43T050P

Polycarbonate: CP43T050M†



Rear Filter Cover Latch

Product: CP43T011



†Polycarbonate orders must meet minimum quantities.

Optirat[®] Plus

Optirat Plus Water Bottle

Assembly

Cap has integrated stainless steel sipper tube that extends down into the cage. Capacity: 500 mL

With Cap:

Polysulfone: CP79W100P

Polycarbonate: CP79W100M†

Without Cap:

Polysulfone: CP79W110P

Polycarbonate: CP79W110M†

Cap Only: CP79W050R

Seal Only: C41050



Optirat Plus Caps for Additional Species

The bottle cap supplies facilities with options for mice, guinea pigs, and other rodents.

Mice (shown): CP79W051R

Guinea Pigs: CP79W053R



Watering Valves, Rack-Mount Removable

Valve: C45027A

Air Seal: C45160

Watering Valves, Cage-Mount

Edstrom: M45050

SE Lab: C45021



Optirat Plus Water Bag Adapter

Installs in the cage top recesses to allow the use of water bags.

Product: CP43T110



Optirat Plus Water Bag Drinking Valve

Constructed from stainless steel; length provides access to bagged water in Optirat Plus applications.

Product: CP45Q100



Surgical Implant Rat Bottle Cap

Angled sipper tube used for rodents with head implants. Provides ample head space clearance for implants when drinking.

Product: CP79W052R



†Polycarbonate orders must meet minimum quantities.

Optirat® Plus

Optirat Plus Feeder Assembly

Hinged cover keeps animals out of the feeder.

Capacity: 1,100 cubic centimeters (67 cubic inches)

Product: CP40F105

Feeder only (no cover)

Product: CP40F100

Feeder Cover

Product: CP40F050

Optirat Plus J-Feeder

For powdered or small-pellet feed.

Product: CP40F115



Surgical Implant Rat Feeder

Trough feeder minimizes damage to head implants.

Capacity: 400 cubic centimeters (24 cubic inches)

Product: CP40F112



Optirat Plus Small J-Feeder

For powdered or small-pellet feed.

Capacity: 400 cubic centimeters (24 cubic inches)

Product: CP40F113



Optirat® Plus

Optirat Plus Mezzanine

Expand internal floor area by 33 percent. Material: polycarbonate.

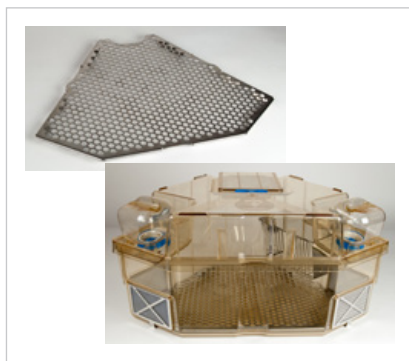
Product: CP79A102M



Optirat Plus Tox Floor

Stamped from flat sheet. More gentle on feet.

Product: CP40B171



Optirat Plus Standard Cage Divider and Feeder

Divide living quarters and food access. Provide visual and auditory contact with conspecifics.

Standard: CP79A110F

Social Holes: CP79A111F

Divider Only

Standard: CP79A110

Social Holes: CP79A111



Optirat Plus Cage Divider for Mezzanine Kit

Divide living quarters and food access with a mezzanine for increased floor area.

Product: CP79A105MF

Social Holes: CP79A105MSOCF

Feeder Only

Product: M40022OR

Divider for Mezzanine Only

Compatible only with a CP79A102MD

Product: CP79A113M

Social Holes: CP79A111

Mezzanine for Divider Only

Compatible only with a CP79A113M

Product: CP79A102MD

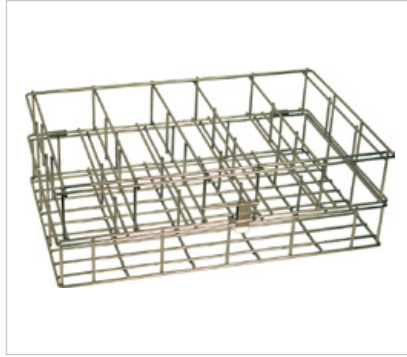


Optirat® Plus

Optirat Plus Water Bottle Basket, 15-Bottle

Hinged lid and clip secure bottles for
washing

Product: CP61A100



Optirat Plus Water Bottle Basket, 20-Bottle

Hinged lid and clip secure bottles for
washing

Product: CP61A101



Cage Cards

3-by-5-inch — five colors available

Product: M52010



Optirat® GenII

The Optirat GenII caging system is built on the same structural frame as Optimice and employs the same motor-free, exhaust ventilated technology as all Animal Care Systems racks. The cages are large enough to comfortably accommodate rats and provide superior visibility, thanks to the wide front face.

Each rack contains 42 cages, arrayed in seven levels with six cages per level. Each cage is equipped with two standard Optimice 400-mL water bottles and a 1.1-liter stainless steel feeder. Cages are available in the same plastic options as all standard Animal Care Systems cages: amber polysulfone and clear polycarbonate.

Like our other carousel-style racks, Optirat GenII can be positioned against a wall or next to another rack. The rotating carousel provides easy cage access without moving racks or forming large aisles. Simply stand in one place, and bring the cages to you. Optirat GenII also can house hamsters, gerbils, guinea pigs, deer mice, and wild-caught rodents. The cage is suitable for invertebrates, as well.

Caging Accessories

We offer a full range of standard and custom accessories designed to optimize our caging systems and maximize the efficacy of lab animal research.

Optirat GenII features

- Ultra-high density
- Simple and lightweight
- Fast and easy cage filter replacement
- Large enough to house rats and other large rodents
- Integrated cage card holder

Same operating principles as all Animal Care Systems racks

- One-pass, low-velocity airflow and total volume air changes
- No electric motors, no energy consumption, no vibration
- Complete biological isolation and containment

Optional automatic watering options

- Valve-on-cage (VOC)
- Valve-on-rack (VOR)
- Removable valve-on-rack (RVOR)



Optirat® GenII

Bare Rack Assembly

No cages.

Product: C76200

Standard Full Rack Assembly, Water Bottles

Complete cage assemblies included.

Polysulfone: C87100P


Polycarbonate: C87100M

Standard Full Rack Assembly, Water Bags

Remove bottle assemblies and replace with one internal water bag holder.

Polysulfone: C87010P

Polycarbonate: C87010M

|  | Optirat GenII Rack | | | | | |
|--|----------------------------------|----------------|----------------|----------------------|------------------------------|--------------|
| | Dimensions <i>Inches (mm)</i> | | | | Weight <i>Pounds (kg)</i> | |
| | Depth | Width | Height | Auto-Water Height | Basic | Auto-Water |
| Full rack | 39.4 (1001) | 39.7 (1008) | 76.5 (1943) | 78.3 (1989) | 534 (242) | 530 (240) |
| Empty rack | 33.7 (856) | 39.7 (1008) | | | 296 (134) | 320 (145) |



†Polycarbonate orders must meet minimum quantities.

All Optirat GenII racks have four 4-inch swivel casters; two casters have locks

[Back to Table of Contents](#)

Optirat® GenII

Optirat GenII Bare Rack Assemblies

No cages.

With Rack-Mounted Edstrom Valves

Compatible with C79502(P/M) Optirat GenII auto-water cages.

Product: C76202

Removable Valve Option

Add to above rack to change valves to removable type.

Option: C75120

Ready For Cage-Mounted Edstrom Valves

Compatible with C79501(P/M) Optirat GenII VOC auto-water cages. Valves not included with rack.

Product: C76201

Ready For Cage-Mounted SE Lab Group Valves

Compatible with C79505(P/M) Optirat GenII VOC auto-water cages. Valves not included with rack.

Product: C76205

With Auto-Water, No Valves or Valve Couplings*

Cage compatibility depends on valve selection.

Product: C76601

Optirat GenII Full Rack Assemblies

Cages included.

With Rack-Mounted Edstrom Valves

Includes C79502(P/M) Optirat GenII auto-water cages.

Polysulfone: C87202P

Polycarbonate: C87202M

With Rack-Mounted SE Lab Group Valves

Includes C83502(P/M) Optirat GenII auto-water cages.

Polysulfone: C87207P

Polycarbonate: C87207M

Removable Valve Option

Add to above rack to change valves to removable type.

Option: C75120

With Cage-Mounted Edstrom Valves

Includes C79501(P/M) Optirat GenII VOC auto-water cages.

Polysulfone: C87200P

Polycarbonate: C87200M

With Cage-Mounted SE Lab Group Valves

Includes C79505(P/M) Optirat GenII VOC auto-water cages.

Polysulfone: C87205P

Polycarbonate: C87205M

†Polycarbonate orders must meet minimum quantities.

* Rack is plumbed for auto-water; however, valves/valve couplings must be acquired and installed before the auto-water system can be used.

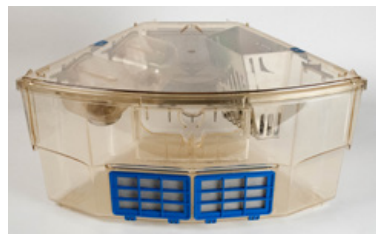
Optirat® GenII

Basic with Internal Water Bottle

Standard cage assembly.

Polysulfone: C83500P

Polycarbonate: C83500M

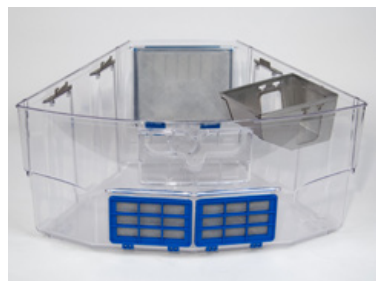


Basic with Internal Water Bag

Remove bottle assembly and replace with internal water bag holder.

Polysulfone: C74C010P

Polycarbonate: C74C010M



Auto-Water Cage Assemblies

No bottles or water bag holders.

With Cage-Mounted Valves

With SE Lab Valve:

Polysulfone: C83505P

Polycarbonate: C83505M

With Edstrom Valve:

Polysulfone: C83501P

Polycarbonate: C83501M

Accommodates Rack-Mounted Valves

Polysulfone: C83502P

Polycarbonate: C83502M

Add Manual Feed Port to Cage Assembly

Replaces standard cage top with one equipped with a spring-loaded manual feed port.

Polysulfone: C75230P

Polycarbonate: C75230M

Replace Standard Feeder with Bottom-protected Version

Protect food at the bottom of the feeder with the restrictor plate feeder.

Product: C75402



†Polycarbonate orders must meet minimum quantities.

[Back to Table of Contents](#)

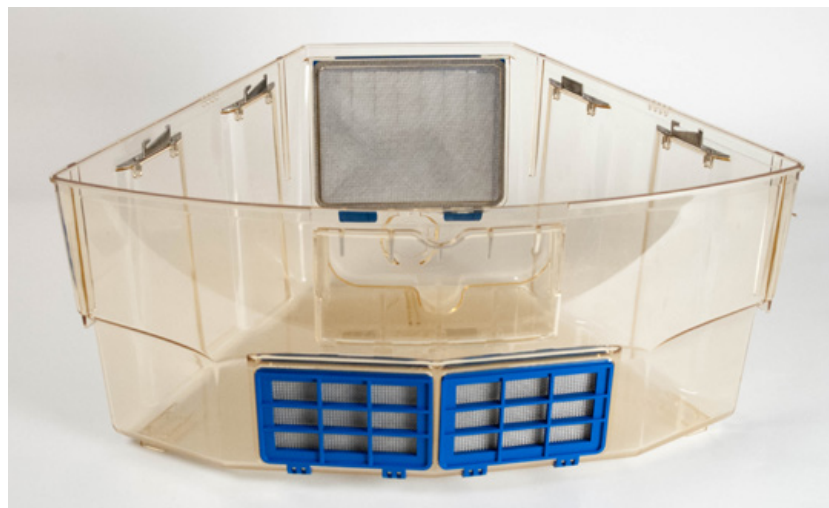
Optirat® GenII

Basic Cage Base Assembly

For use with water bottles or bags. Includes filters.

Polysulfone: C83510P

Polycarbonate: C83510M



Auto-Water Cage Base Assembly, Cage-Mounted Valve

Watering valve not included with cage base. Valve type must be matched to rack.

Polysulfone: C83511P

Polycarbonate: C83511M

Compatible Valves

Edstrom: M45050

SE Lab: C45021

Auto-Water Cage Base Assembly, Rack-Mounted Valve

Spring-loaded door accommodates fixed and removable rack-mounted valves.

Polysulfone: C83512P

Polycarbonate: C83512M

Optirat GenII Auto-Water Pre-Charge Station

Purge trapped air from cage-mounted valves before use.

Edstrom Product: C83361

SE Lab Product: C83366

Optirat GenII Cage Base Skid

Placed at the bottom of a stack of cages, the cage skid enables effortless sliding across floor or other surfaces.

Product: C83391

†Polycarbonate orders must meet minimum quantities.

Optirat® GenII

Standard Cage Top Assembly

Polysulfone: C79520P
Polycarbonate: C79520M



Manual Feed Port Cage Top

Equipped with a spring-loaded manual feed port.

Polysulfone: C79522P
Polycarbonate: C79522M



Optirat GenII Cage Top Clip

Replacement latching clips; sold individually.

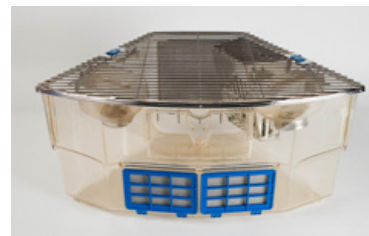
Product: C43320
Mounting Screws: C30120



Wire Bar Cage Top Assembly

Converts a standard cage to conventional mode. Do not use on cages installed in Optirat GenII rack.

Product: C79525



†Polycarbonate orders must meet minimum quantities.

Optirat® GenII

Standard Bottle Assembly

Includes hanger, seal, and cap.

Capacity: 400 mL

Polysulfone: C79122P

Polycarbonate: C79122M

Bottle without Cap

Polysulfone: C79132P

Polycarbonate: C79132M



Black Bottle Assembly

Available in polysulfone only. Includes

hanger, seal, and cap.

Capacity: 400 mL

Product: C79122PBLK

Bottle without Cap

Product: C79132PBLK



Red Bottle Assembly

Available in polysulfone only. Includes

hanger, seal, and cap.

Capacity: 400 mL

Product: C79122PRED

Bottle without Cap

Product: C79132PRED



Internal Water Bag Holder

For Hydropac only.

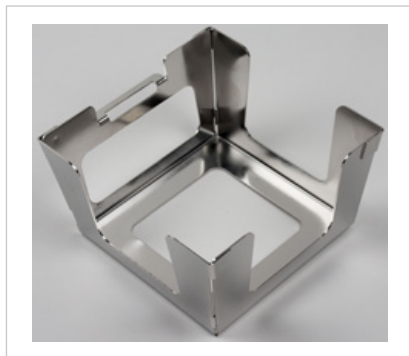
Product: C79585



Water Bottle Guard

Compatible only with Optirat GenII.

Product: C40416



Optirat® GenII

Bottle Seal

Product: C41050



Bottle Hanger

Product: C40320



Optirat® GenII

Standard Internal Bottle Cap

Product: C40150



Ball Sipper Tube Bottle Cap

Ball provides a better seal with fewer incidental drips.

Product: C40153



Watering Valves, Rack-Mount Removable

Valve: C45027A

Air Seal: C45160

Watering Valves, Cage-Mount

Edstrom: M45050

SE Lab: C45021



Curved Sipper Tube Bottle Cap

For guinea pigs.

Product: C40151



Bottle Cap with 1.5-inch Sipper Tube

Provides mouse pups or less mobile rodents with a lower, more easily accessed sipper tube.

Product: C40154



Water Cap Valve Assembly

For use with cage-mounted valves only

Product: M45080A



Edstrom Auto-Water Deprivation Cap

Product: M45055



Optirat® GenII

Rear Filter Nozzle

Product: C43430



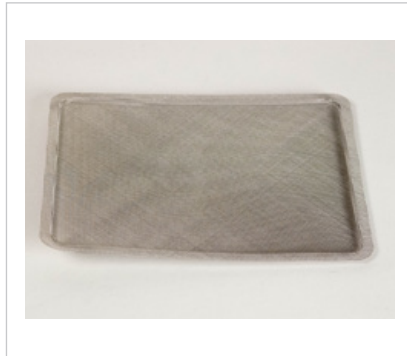
Rear Filter Reemay

Product: C43L002



Rear Filter Inner Screen

Product: C404S040



Rear Filter Outer Screen

Product: C404S041



Rear Outer Screen Wire Retainer

Product: C404SR01



Optirat® GenII

Front Filter Retainer

Product: C43440



Front Filter Reemay

Product: C43L001



Front Filter Inner Screen

Product: C40L101



Front Filter Outer Screen

Product: C404S016



Filter Table Top Fixture Kit

Includes table top fixture with 2 clamps,
tapered screwdriver

Product: C79070TTF1

Optirat® GenII

Optirat GenII Standard Feeder

All stainless. Option to hang one bottle at two different heights.

Capacity: 1,100 cubic centimeters (67 cubic inches)

Product: C40401



Optirat GenII J-Feeder

For powdered and small-pellet feed.

Can be used for guinea pig feed.

Product: C40405



Optirat GenII Standard Feeder with Restrictor Plate

Protect food at the bottom of the feeder with the restrictor plate feeder.

Capacity: 1,100 cubic centimeters (67 cubic inches)

Product: C40402



Optirat GenII Surgical Implant Feeder and Water Bottle Assembly

A special trough feeder and water bottle that minimizes the risk of damage to head implants.

Bottle capacity: 500 mL

Feed capacity: 400 cubic centimeters (24 cubic inches)

Polysulfone: C79586P

Polycarbonate: C79586M

Feeder Housing Only

Product: C40408

Water Bottle Only

Product: CP79W103M



Optirat® GenII

Optirat GenII Standard Cage Divider and Feeder

Divide living quarters and food access. Provide visual and auditory contact with conspecifics.

Product: C83175M



Optirat GenII Standard Tox Floor

Stamped from flat sheet, more gentle on feet.

Product: C40175



Optirat GenII Cage Divider with Social Holes and Feeder

Holes in divider allow olfactory and tactile contact.

Product: C83176M

Feeder Only

Product: M40022OR

Standard Divider Only

Product: C43117

Standard Divider with Social Holes

Product: C43118

Optirat GenII Wire Bar Tox Floor

Large openings for thorough waste isolation.

Product: C40176



Material Handling

Bulk Truck Medium Duty

Safely transport or store large quantities of cages; rated to hold up to 1,000 pounds; four 5-inch casters; two of the casters do not swivel, and the other two swivel and lock.

44x27x68-inch:

BT-CH-44x27x68-MD

45x29x68-inch:

BT-CH-45x29x68-MD

60x24x68-inch:

BT-CH-60x24x68-MD

60x32x68-inch:

BT-CH-60x32x68-MD

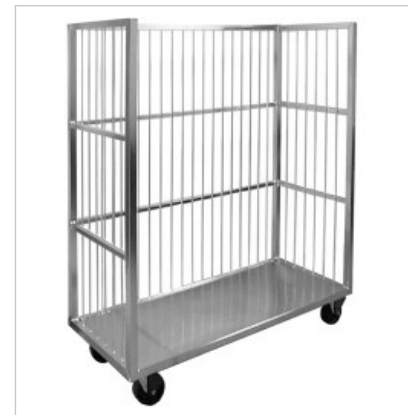


Bulk Truck Heavy Duty

Safely transport or store large quantities of cages; rated to hold up to 1,500 pounds; four 6-inch casters; two of the casters do not swivel, and the other two swivel and lock.

24-inch depth: BT-60x24x68

32-inch depth: BT-60x32x68



Bulk Truck Adjustable Shelf

Sterilizable, heavy-duty construction

60x24: BTS-60x24

44x32: BTS-60x32

44x27: BTS-44x27



Bulk Truck Covers

Sterilizable cover to keep dust and debris from collecting on stored cages.

24-inch depth, zipper:

EC-60x24x68-Z

24-inch depth, Velcro:

EC-60x24x68-V

32-inch depth, zipper:

EC-60x32x68-Z

32-inch depth, Velcro:

EC-60x32x68-V



Bulk Truck Grid Doors

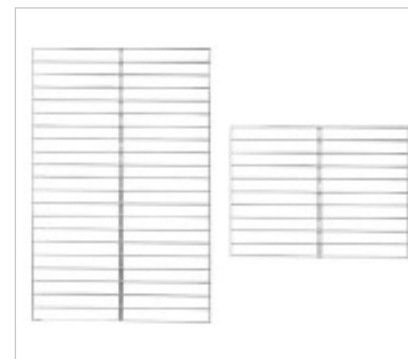
Sterilizable, heavy-duty construction

Full, 60x60: BTD-60x68-F

Full, 44x67: BTD-44x75-F

Half, 60x33: BTD-60x34-H

Half, 44x37: BTD-44x37-H



Material Handling

Accessory Basket

For use with assorted accessories when washing or sterilizing.

Product: AB-18x12.25x6-WL

Basket only: AB-18x12.25x6

Lid only: AB-18x12.25x6-L



Water Bottle Basket Dollie

Off-set handle for easy handling; holds up to eight 9-inch-high bottle baskets; four 4-inch casters

Dimensions: 20x26.125x36 inches

Product: WBBD-6-SS



Utility Cart - 2 Shelf

Two shelves; four 5-inch casters, two with brakes; holds up to 150 pounds

40x24x36: UC2-40x24x36

40x24x36, with handle bars:

UC2-40x24x36-1HB

40x24x36, with raised edges:

UC2-40x24x36-1HB-3ES

40x24x36, with third shelf:

UC3-40x24x36



Platform Cart - 2 Handle

Handle bars at both ends for convenience; center and caster braces for greater support; four 6-inch casters, two with brakes; holds up to 400 pounds.

Dimensions: 43x24x34.4 inches

Product: PFC-43x24x35



32x19x36: UC2-32x19x36

32x19x36, with handle bars:

UC2-32x19x36-1HB



Material Handling

Shelf Rack - Adjustable

Sterilizable; four 5-inch casters, two with brakes

Four shelves: SRA4-60x24x72

Five shelves: SRA5-60x24x72

Six shelves: SRA6-60x24x72

Seven shelves: SRA7-60x24x72



Dunnage Rack

Store items such as boxed and bags of feed or bedding off the floor; holds up to 4,000 pounds

Dimensions: 48x24x12 inches

Product: DR-48x24x12-A



Shelf Rack - Fixed

Sterilizable; four 5-inch casters, two with brakes; holds up to 150 pounds per shelf

Four shelves: SRF4-60x24x72

Five shelves: SRF5-60x24x72

Six shelves: SRF6-60x24x72



Clean Table

Leveler feet for stability; thick top for greater rigidity

Dimensions: 60x24x34 inches

Product: CT-60x24x34

With backsplash : CT-60x24x34-B

With backsplash and full shelf:

CT-60x24x34-B-FS

48x24x34, with backsplash and full shelf:

CT-48x24x34-FS



Material Handling

Optimice and Optirat GenII Water Bottle Basket, 20-Bottle

Compatible with Optimice and Optirat GenII bottles. Hinged lid and clip secure bottles for washing.

Product: C61010



Protective Cover

Protective cover for 20-bottle basket.

Product: C49COV45Z

Optimice and Optirat GenII Water Bottle Basket, 15-Bottle

Compatible with Optimice and Optirat GenII bottles. Hinged lid and clip secure bottles for washing.

Product: C61011



With Detachable Lid

Product: C61012

Protective Cover

Protective cover for 15-bottle basket.

Product: C49COV35Z



Bottle Cap Removal Tool

Ergonomic bottle cap remover for Optimice and Optirat GenII

Product: C79190



Cage Top Washing Racks

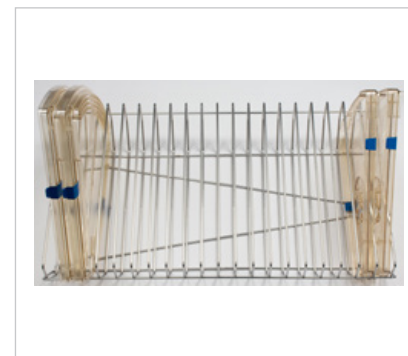
Accommodates Optimice and Optirat GenII cage tops; bottle/bag washing rack is required for external water tops.

Standard (pictured): C61020

Capacity: 20 lids

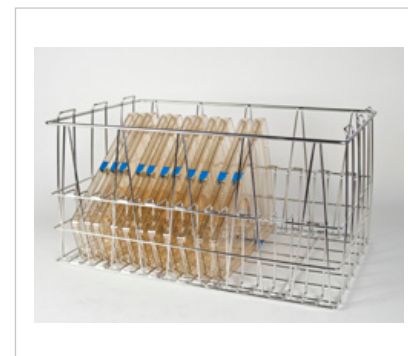
Bottle/Bag: C61022

Capacity: 18 lids

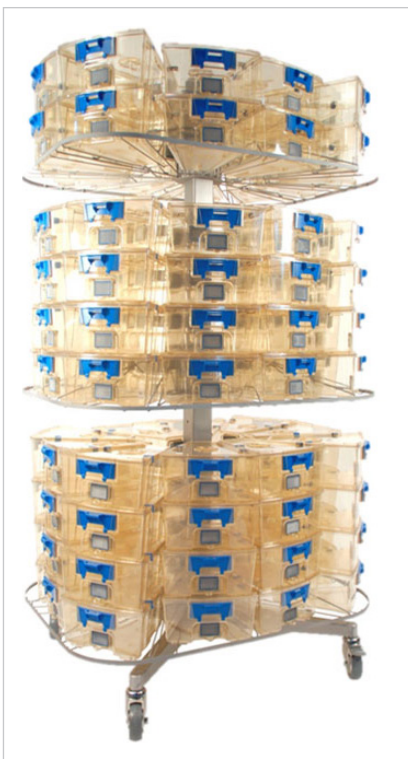


Stackable (pictured): C61023

Capacity: 19 lids



Material Handling



Individual Parts

Change-out rack base: CORA0S0
Optimice cage shelf: C50051
Accessory shelf: C50052

Change-Out Rack for Optimice

Store, transport, wash, and sterilize Optimice cages and accessories on this customizable, durable stainless steel rack. Popular options are listed below.

Option 1

Two Optimice cage shelves and one accessory shelf

Product: CORA1S2

Option 2

Three Optimice cage shelves

Product: CORA0S3 (shown)

Option 3

Five Optimice cage shelves

Product: CORA0S5

Option 4

Two Optimice cage shelves

Product: CORA0S2

Option 5

Two accessory shelves

Product: CORA2S0

Option 6

Three accessory shelves

Product: CORA3S0

Option 7

Four Optimice cage shelves and one accessory shelf

Product: CORA1S4



Change-Out Rack for Optirat GenII and Optirat Plus

Rack base and shelves are ordered a la carte for greatest flexibility; shipped assembled. Between one and three shelves per base are recommended for Optirat GenII and Optirat Plus.

| | |
|-----------------------------------|-----------------|
| Change-Out Rack Base: | CORA0S0 |
| Rack Assembly with Two Shelves: | CORA2S0 (shown) |
| Rack Assembly with Three Shelves: | CORA3S0 |
| Accessory Shelf: | C50052 |

Protective Cover

Protective cover for change-out rack.

Product: C49164



Rack Accessories

Anemometer Assembly Kit

Ensure adequate air velocity to assist in rack installation.

Product: M79211



Iris 100 Damper

4-inch: M49D100

6-inch: M49D150



Rack Status Monitor Kit

Install on existing rack for continuous airflow monitoring.

Product: C79355

Individual Parts

Display Unit: C79355DU

Sensor Tube Unit: C79355ST



Butterfly Valve Damper Assembly

Restrict excessive airflow; 3-inch connection

Product: M79190



Fail Safe Fan

Provide emergency ventilation in the event of extended HVAC failure.

Product: C80011



Rack Accessories

Opti Rack Light Kit, Frosted Lens

Provides even, orthogonal lighting across the full height of a rack with no need to light an entire room. Powered by rechargeable battery or AC adapter. Compatible with Optimice, Optirat GenII, and Optirat Plus

With Battery: C80050FRS

With AC Adapter: C80051FRS

Red Cover Lens:

Attaches to light bar to produce red light.

Product: C43801RED



Rack Exterior Spacers

The side and rear spacers automates rack spacing.

Rear Spacer: C89SPACER1

Side Spacer: C89SPACER2



Vibration Isolator Pads

Place one pad beneath each of the rack's casters to drastically reduce transmitted vibration from construction or large equipment. Two per package.

Product: C49200



Opti Rack Cover

Protective cover for carousel racks.

Product: C49163

Venting & Ducting

V-Duct Box Assembly

Available with 4- or 6-inch connection.

4-inch Product: M79V42

6-inch Product: M79V62



Universal Exhaust Box Assembly

4-inch Product: M79244

6-inch Product: M79264



V-Duct Box with Iris Damper Assembly

Available with 4- or 6-inch connection.

4-inch Product: M79V42D

6-inch Product: M79V62D



Universal Exhaust Box with Iris Damper Assembly

4-inch Product: M79244D

6-inch Product: M79264D



Ceiling Drop Assembly

Connect a single exhaust hose to a 4- or 6-inch ceiling drop.

4-inch Product: M79230

6-inch Product: M79235



Exhaust Adapter Plate

The adapter plate is custom-designed to fit your ventilation requirements in any animal room with an exhaust grill. Simply relay the dimensions to your local rep or directly to Animal Care Systems, and a price quote will be generated.

Product: M79260

Venting & Ducting

High-temperature 6-foot Flex Hose Assembly

Standard hose shipped with all racks.

Product: M79H06

High Temperature Custom Length Flex Hose; 25 Feet, Max Length

Replace last two digits (represented by XX, below) in part number with desired length in feet.

Product: M79HXX



Light Weight Flex Hose Assembly

Not suitable for sterilization.

5-foot Product: M79056P

10-foot Product: M79055P

15-foot Product: M79051P

20-foot Product: M79052P



Stainless Steel Hose Clamp, 3-inch

Fits standard rack hoses.

Product: M21041



Hose Connector Fitting, 3-inch

Fits standard rack hoses.

Product: M21050GFN



Optihose Guide Bracket

Guides and holds exhaust hoses neatly in place alongside rack for exhaust drops not in the ceiling.

Product: C40601

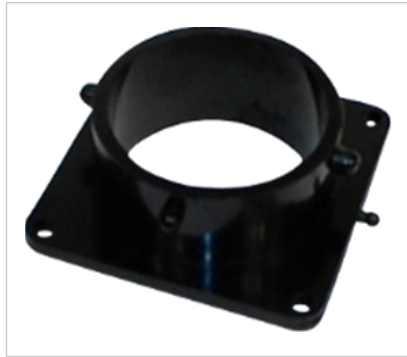


Venting & Ducting

Ceiling Flange

Standard hose connection on Animal Care Systems racks.

Product: M21061GFN



Ceiling Flange Cap

Cap open ceiling flange connection(s) on a rack when fewer exhaust hoses are used.

Product: M21080GFN



Load Simulator Cap

Cap open exhaust hose connections to simulate exhaust system load when a rack is absent.

Product: M21081GFN



Ceiling Drop Adapter

Bare, unmodified.

Product: M21090GFN



Venting & Ducting

Quatro Air

Quatro Air is a self-contained canister ventilator intended for use with an Animal Care Systems rack when room exhaust ventilation is not available. Each Quatro Air unit is fitted with either single or dual exhaust hose thimble connectors.

As air is drawn through the Quatro Air system, it undergoes three stages of filtration before being released back into the room through the louvers near the bottom. A pre-filter removes larger particles from the air, and a HEPA filter removes remaining smaller particles, rendering the air mechanically pure. Finally, an activated carbon bed removes odorous chemicals that may also represent a significant breathing hazard to personnel and animals.

The Quatro Air unit has three operation speeds and can move up to 120 cubic feet of air per minute with sufficient static pressure needed to ventilate an Animal Care Systems rack.

Quatro Air Filtration Unit

120V System: M83100

220V System: M83101

Replacement Filters

99.97% HEPA Filter: M831F074
Filter Pads (6 pack): M831F069-220
Filter Pads (12 pack): M831F069-71
Pleated Pre-Filter (6 pack): M831F071

Carbon Module

Product: M831F072-GPC

Bulk Chemical Media

Good for approximately 3-4 refills of an F072 module.

Product: M831NC-GPC

