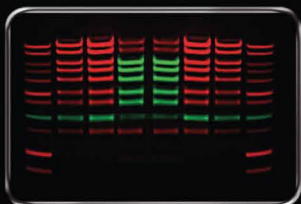


UVITEC  
CAMBRIDGE



# BIOMOLECULAR IMAGING



New infrared  
Chroma module  
for fluorescent  
Western blotting



Discover how the highest  
imaging performance  
could help your  
laboratory





## About us

UVItec designs and manufactures high quality fluorescence and chemiluminescence imaging systems and analysis software as well as a wide range of Ultra Violet instruments for Life Science research.

Founded in 1996, UVItec has played a leading role in the advancement of molecular imaging for over 20 years by providing innovative camera technology and optical solutions.

## Global Scope

Based in Cambridge, in the heart of the European Biotech Industry, with several manufacturing facilities in Europe, we focus on producing scientific imaging systems which integrate state of the art optics with hardware and software optimized for your specific application. Worldwide the company is renowned amongst all major research centers, universities as well as biotechnology companies for its commitment to quality and customer service.

Our global market presence had ensured that over 80 000 scientists have chosen UVItec as their leading molecular biology application partner.

As a company and as individuals we deeply care about the environment and are proud of the many ways in which our employees work to safeguard it.

## Imaging technologies

Technology has been propelling our growth: technology that makes sense for you. Pick up many imaging systems and you start to wonder if their designers have ever taken a picture themselves. From start our systems are designed with the User in mind. This means self-explanatory, clear menus, buttons that are easy to operate, a wide range of automatic settings covering virtually every imaginable application and protocol-driven working principles. Our systems have the ability to grow with your need and offer a list of features extensive enough to satisfy the most demanding lab user.

At UVItec we give very high priority to technical expertise and customer support for all our products which have rapidly become favourite in many leading institutions worldwide.

## CONTACT

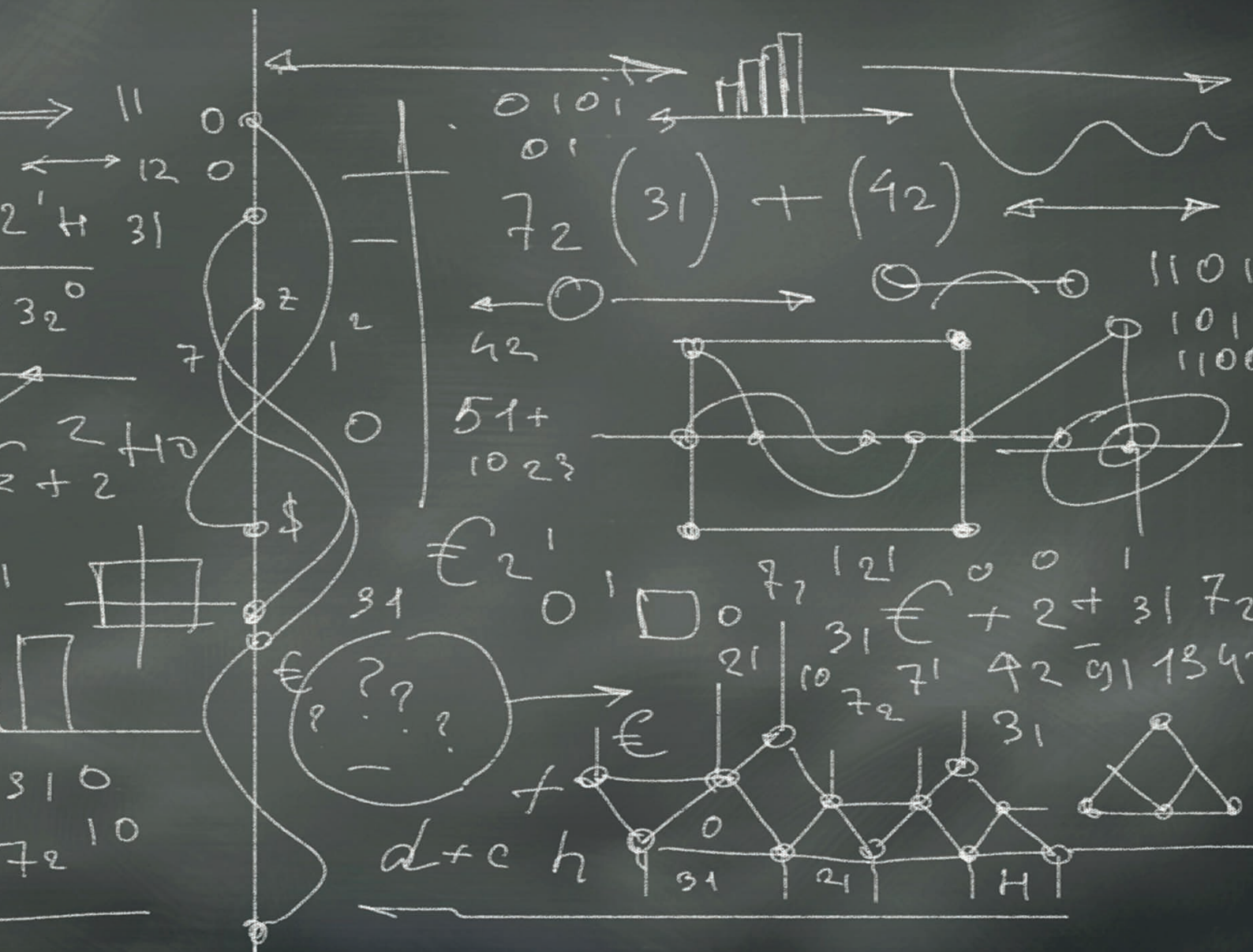
Uvitec Limited  
Unit 3.05, St John's Innovation Centre  
Cowley Rd  
Cambridge  
CB4 0WS  
United Kingdom  
T. +44 (0) 1223 421270  
T. +44 (0) 1223 421271  
E-mail. [uvi@uvitec.co.uk](mailto:uvi@uvitec.co.uk)

[WWW.UVITEC.CO.UK](http://WWW.UVITEC.CO.UK)



**UVITEC**  
CAMBRIDGE





## ADVANCED SYSTEMS

Chemiluminescence and fluorescence imaging

- Q9 Alliance Advanced - Chroma
- Q9 Alliance Advanced
- Q9 Alliance Mini
- Q9 Alliance Touch

## Cutting Edge Performance

The multimodal platform

“ We are proud of our Q9 Alliance Advanced. We use it for chemiluminescence and near-infrared multiplexing as an alternative to Licor unaffordable equipment. I need to say I am pleasantly surprised by the performance of the Uvitec system. Our razor sharp images are ideal for quantification and publication. ”

### > Get the excitation

Chroma multi-wavelength special netled Laser led technology is a powerful epi-illumination source for western blot which enlarges a wide range of fluorescence dye applications for your Q9 system. Enter the exciting, new laboratory world of fluorescent Western blotting, in-vivo, protein imaging, near infra-red and infra-red detection, bio-luminescence, and bio-fluorescence.

Chroma applications include SYBR-Green®, Qdots®, Alexa Fluor®, Cy®, Dylight® and LI IR® . Chroma features multi-wavelength illumination on adjustable arms, from blue, green, red, up to near infra-red and infra- red. Simply select the color channel or the protocol and get the excitation!

### > Making light work

Our multi-wavelength Chroma allows Users to expand their applications to include multiplex Westerns, among many others. Chroma technology is uniquely designed to give the most focused and intense excitation light in order to increase the probability of a successful analysis.

#### Blue excitation

- SYBR Safe®
- SYBR Green I®
- SYBR Green II®
- SYBR Gold®
- FITC®
- EGFP®, GFP®
- CY2®

- FAM®
- ALEXA FLUOR 488®
- DYLIGHT488®
- SYPRO Red®
- GEL GREEN®
- ATTOPHOS®

#### Green excitation

- ALEXA FLUOR 532®
- ALEXA FLUOR 546®
- CY3®
- DYLIGHT 549®
- SYPRO RED ®
- DEEP PURPLE ®
- RHODAMINE RED®

#### Red/Near Infra-red excitation

- ALEXA FLUOR 635®
- CY5, CY5.5®
- DYLIGHT 649®
- BODIPY 650®
- ALEXA FLUOR 647®
- CY7®

- DYLIGHT 690®
- LI680/IRDye 680®
- ALEXA FLUOR 790®
- ALEXA FLUOR 750®

#### Infra-red excitation

- DYLIGHT 820®
- DYLIGHT 800®
- IR DYE 800®

Long life filtered Laser leds are organized in array in order to maximize the excitation energy on the sample while the captured light is passed through narrow emission high end filters to give images of the highest uniform and intense quality for professional multiplexing usage and further quantification and studies.

The Q9 Alliance Advanced allows an automatic setting of the filters, lens focus and exposure time to ensure data consistency and ease of use.

### > Tailor your system

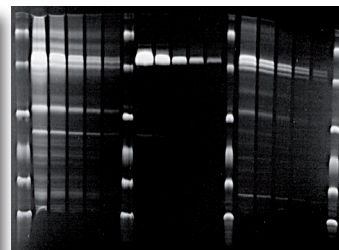
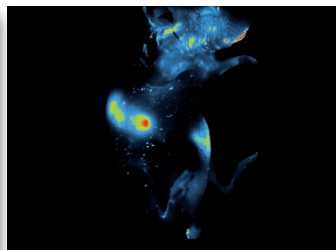
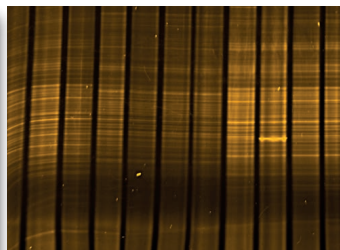
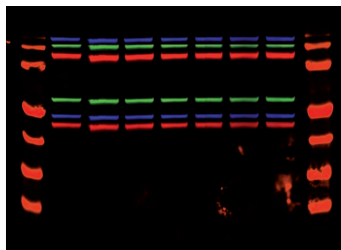
The Chroma multi-wavelength is available in a variety of models to fit your budget and application. Options include, for instance, single blue excitation channel up to the most complete platform of multichannel excitations.

The motorized, multiple position filter wheel can accommodate your own custom emission filters in addition to our large choice of factory filters.

You can create your own multiplexing protocol and our Q9 Alliance Advanced will manage the filter positioning, excitation light on/off process and the multi-image acquisition in a completely automatic way.

### > Chemical attraction

- Chemiluminescence, bio-luminescence, fluorescence and visible
- Multiplexing and bio fluorescence ready
- Quantification and documentation
- Gene expression, protein Expression; RNA/DNA assay, colonies
- In vivo by luciferase and In vivo RFP/GFP
- Open to most dyes available on the market from Invitrogen, GE life science, Thermo Pierce, Sigma, Millipore, Promega, Licor



CHEMILUMINESCENCE  
 BIOLUMINESCENCE  
 FLUORESCENCE ON WESTERN BLOTS  
 IR TO VISIBLE IMAGING  
 CUSTOMISABLE MULTIPLEXING  
 UV FLUORESCENCE



## MULTI-WAVELENGTH

### > Colours of life

- Scientific grade CCD camera
- Super HD 9.2 megapixel native camera resolution
- Near infrared, infrared, visible (RGB, white) and UV excitations
- Automatic lighting controls
- Powerful long lasting LED,
- Laser netted based CHROMA technology
- Narrow filtered excitation and emission
- Custom filters available
- Motorised multi position filter wheel
- 16-bit depth camera (65 535 grey levels)
- Dynamic range: 4.8 OD
- Extreme sensitivity and resolution
- Electronically variable shutter speed
- Ideal for sensitivity demanding applications such as western blotting
- Ideal for resolution demanding applications such as 1D quantification , 2D gels, multiplexing, western blots.
- Cooling -60°C, regulated 3 stage Peltier for the lowest noise and the best detection of the weakest band
- Extremely bright custom-made motorised fixed lens (F0.80)
- Autofocus, auto-exposure
- Robust steel and stainless steel darkroom construction, epoxy painted, chemical resistant
- Roll-out transilluminator, UVI pure patented option
- Advance UViband software available
- Direct access to key functions
- Multi-user capability
- Good Laboratory Practice (GLP) file
- IQ/PQ/OQ available
- “One touch” fully automated image acquisition programme

# Q9 ALLIANCE ADVANCED

## No compromise Unrivalled sensitivity

“ Our Q9 Alliance Advanced is incredibly sensitive. Powerful and fully motorized, the cutting edge camera and optics deliver ultimate scientific grade images ideal for all your applications. ”

### > In the spotlight

Alliance Q9 is an advanced imaging system designed to cover a large number of applications thanks to its proprietary optics combined with a deeply cooled 9.2 megapixel, 16 bit depth camera.

Ideal for western blot, 1D and 2D gels, fluorescence and any imminent epi fluorescence applications on Western blots, the system is extremely sensitive, with extreme resolution and low noise.

### > Motorised F0.80 lens

Q9 Alliance Advanced includes an impressive list of features such as auto-focus, auto-exposure, UV security timer and override, motorised F0.80 lens and motorised filter wheel.

The system offers up to 12 illumination possibilities as an option and 5 already included. Its complete automated imaging approach from filter wheel positioning, to lighting system and lens aperture, makes Q9 Alliance Advanced a unique system on the market.

### > Designed to be used

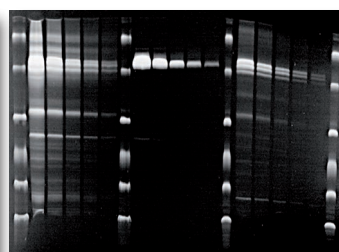
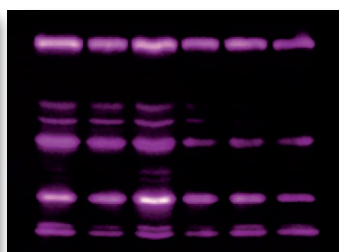
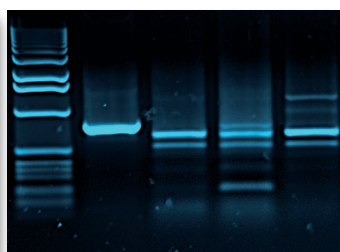
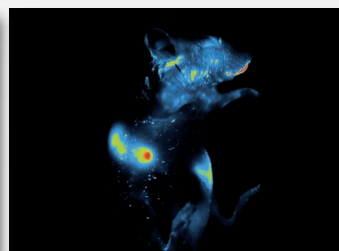
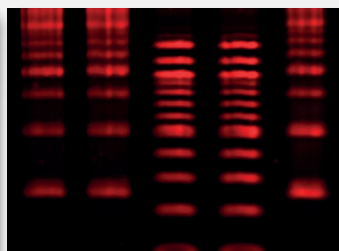
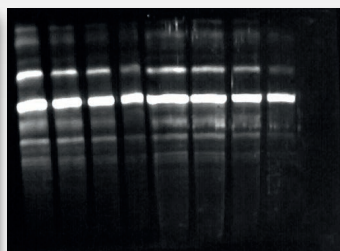
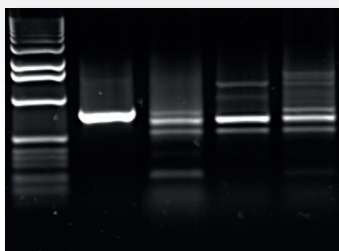
Pick up many imaging systems and you start to wonder if their designers have ever taken a picture themselves. Q9 Alliance Advanced was designed from the start with the User in mind. This means menus that make sense, buttons that are easy to understand and operate, a wide range of automatic settings, covering virtually every imaginable application and protocol driven working principles.

If you prefer a more “hands-on” approach, you will love the manual controls.

Q9 Alliance Advanced has the ability to grow with the user and has a list of optional features extensive enough to satisfy the most demanding lab User.

### > Chemical attraction

- Chemiluminescence, bio-luminescence, fluorescence and visible
- Multiplexing and bio fluorescence ready
- Quantification and documentation
- Gene expression, protein expression; RNA/DNA assay, colonies
- In vivo by luciferase
- RGB Led equipped
- Optional in vivo by RFP/GFP
- Optional Chroma to image any blot conjugated with any dyes available on the market from Invitrogen, GE Life Science, Thermo Pierce, Sigma, Millipore, Promega, Licor
- Optional customisable multiplexing





CHEMILUMINESCENCE  
 BIOLUMINESCENCE  
 UV FLUORESCENCE  
 RGB LED BY DEFAULT  
 FLUORESCENCE ON WESTERN BLOTS :  
 OPTIONAL IR/NIR CHROMA  
 OPTIONAL CUSTOMISABLE MULTIPLEXING



## SENSITIVITY AND RESOLUTION

### > State of the art

- Scientific grade CCD camera
- Super HD 9.2 megapixel native camera resolution
- Chemiluminescence , bio-luminescence, epi white light LED and UV excitation
- RGB LED included
- Optional IR/NIR customisable chroma
- Optional customisable multiplexing
- Automatic lighting controls
- Custom emission filters available
- Motorised multi position filter wheel
- 16-bit depth camera (65,535 shades of gray)
- Dynamic range: 4.8 OD
- Extreme sensitivity and resolution
- Electronically variable shutter speed
- Ideal for sensitivity demanding applications such as Western blots or in vivo luciferase
- Ideal for resolution demanding applications such as 1D quantification, 2D gels
- Cooling -60°C regulated 3 stage Peltier for the lowest noise and the best detection of the weakest band
- Extremely bright custom made motorised fixed lens (F0.80)
- Autofocus, auto-exposure
- Robust steel and stainless steel darkroom construction, epoxy painted chemical resistant
- Roll-out transilluminator, UVI pure patented option
- Advance UViband software available
- Direct access to key functions
- Multi-user capability
- Good Laboratory Practice (GLP) file
- IQ/PQ/OQ available
- “One touch” fully automated image acquisition programme

## The Highest performance at a budget

Sensitivity and ease of use

“ From the very first day our Mini was installed, we have benefited from incredible cost savings on our Xray film budget and the research team has found it much better at detecting and using! ”

### > Say goodbye to your darkroom

The Mini Q9 has been designed especially for laboratories that are looking for a small-footprint, valid alternative to using X-Ray film for their blot imaging.

Generally speaking, laboratories are quite anxious to move from using x-ray films as it is costly consumable, and because the results are not quantifiable. However, scientists also expect an imaging system to perform at least as well in terms of sensitivity. Mini Q9 offers superior performance in sensitivity. All components and features in the system are chosen to provide the highest sensitivity. Mini Q9 allows the faintest signal to be detected and quantified, with extreme ease.

### > Effective and Efficient

A simple and rapid interface greatly facilitates the work of scientists, giving direct access to the main functions at a glance. The Auto exposure function in the Q9 enables the research scientist to instantly judge the most optimal exposure time to image capture. By combining algorithms based on theory with

real experience in the field, our unique Auto exposure feature captures the highest data level without saturation to ensure quantification with confidence. Scientists find their workload greatly reduced by not having to take multiple exposure times in order to find an optimum.

### > Cleaner, greener, richer...

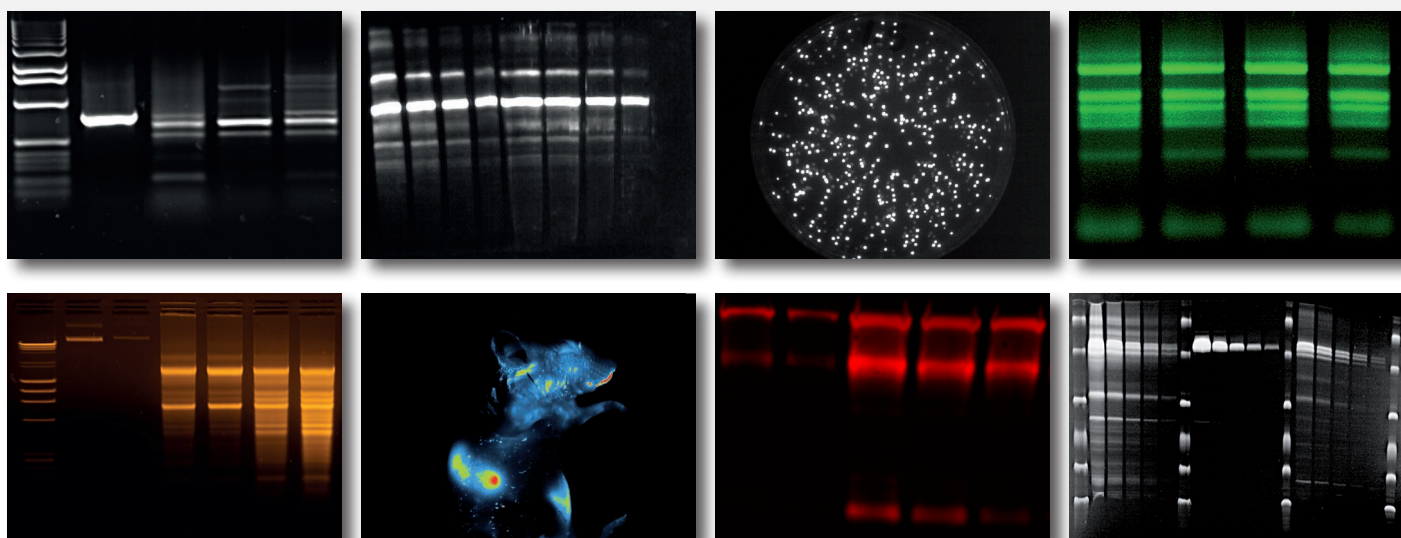
Modern laboratories are happy to spend less money on expensive and toxic consumables. Budgets are always getting tighter and consumable costs are notoriously difficult to control. People find that Mini Q9 rapidly pays its way, and eliminating the use of toxic chemicals is always a wise option.

### > Mini means small!

The compact and economical design is ideal for today's busy environment. With the smallest footprint, at only 35cmx35cm, Mini Q9 frees up precious worktop space.

### > Quality for a long life

Uvitec customers enjoy trouble-free use of our systems for many years. Mini Q9 is built to the same exacting standards that we use in all our production. As we deal in a global area, it is important for us to supply a well-made product using the highest quality components. For example, this quality is evident in the strength and robustness of the steel darkroom. Using steel shows we build for the long term and so can ensure that no deformation can occur over time which would allow outside light enter the darkroom.



CHEMILUMINESCENCE  
 BIOLUMINESCENCE  
 RGB LED BY DEFAULT  
 OPTIONAL UV FLUORESCENCE  
 OPTIONAL CUSTOMISABLE MULTIPLEXING



## SENSITIVITY AND RESOLUTION

### > State of the art

- Super HD 9.2-megapixel native resolution camera
- 16-bits depth (65,535 grey levels)
- Dynamic range 4.8OD
- Extreme sensitivity
- Design dedicated to Western blot detection and quantification
- Extreme resolution
- RGB LED included
- Optional customisable multiplexing
- Extremely low noise
- Scientific grade CCD camera
- Electronically variable shutter speed
- Cooling 3 stage Peltier -60°C regulated for the lowest noise
- Extremely bright fixed lens
- Auto-exposure
- Automatic light control
- Ideal for sensitivity demanding applications such as Western blots or in vivo luciferase
- Compact design
- 35cmx35cm footprint
- No maintenance required
- Black body imaging
- Easy to use software
- Robust steel and stainless steel construction
- Advanced Uviband software available
- Direct access to Key functions
- Multi user capability
- Good laboratory practice (GLP) files
- One touch fully automated image acquisition program
- IQ/PQ/OQ procedures available
- Very large lens aperture F0.80
- 4-position filter wheel motorised
- Mini Q9: semi-automatic system, pre calibrated focus. Auto-exposure, automatic light system, motorised filter wheel.

# Q9 ALLIANCE TOUCH

## The Stand-alone blot imaging performer

All-in-one, Compact, Extremely sensitive

!! *When it comes to stand-alone imagers, the offer is quite big. But we are thrilled by both sensitivity and robustness of our Q9 Alliance touch system. We had encountered so many issues with built-in tablets in other all-in-one systems and/or low-quality touch screen. Mini Q9 Touch features a real on-board computer allowing editing and many functions directly from our screen.* !!

### > Tailor your system

Q9 Alliance Touch can come as a dedicated chemiluminescence system or a combined imaging platform with UV fluorescence transilluminator. UV tables/modules may be incorporated at any time, thanks to our patented plug-and-play system, such as our RGB Chroma module for epi fluorescence on Western blots.

### > Auto in our motto

You will be seduced from the moment you start using Q9 Alliance Touch. This system features outstanding camera performance combined to fully automatic acquisition mode, motorized lens aperture, automatic light control, auto-exposure, very robust hardware and sophisticated touch screen software interface.

### > SSD drive or nothing

Our Q9 Alliance Touch features a real on-board, Windows-operated computer allowing a secure and immediate speed transmission of your camera CCD on the touch screen. You can save pictures directly on the PC or on your USB key and can of course network your system for further quantification and

analysis purpose. The Q9 Alliance Touch's overall robustness is unrivalled and the comfort of our Touch screen using a double protection glass is incredible.

### > Sensitive and versatile

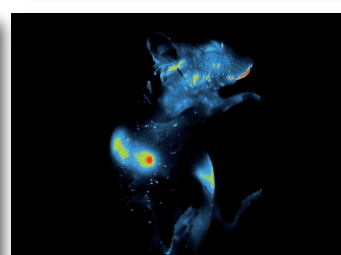
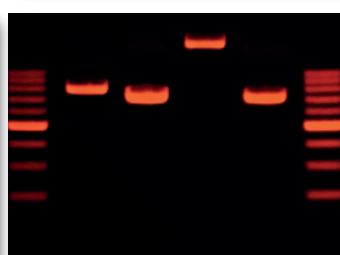
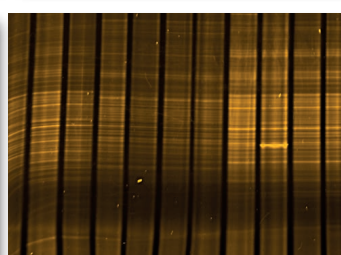
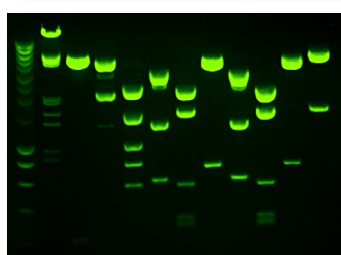
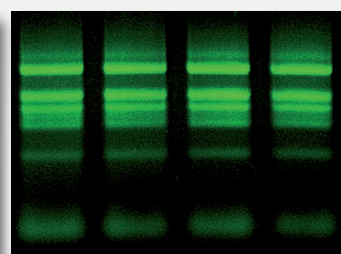
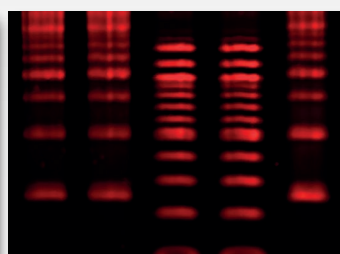
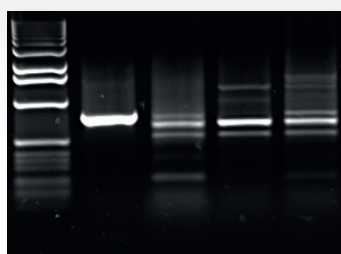
Challenge us for a demo! The exceptionally sensitive and deeply cooled camera ensures that the faintest bands are detected and accurately quantified without having to rely on binning modes! The camera's 9-megapixel extreme native resolution allow closely spaced band to be easily resolved.

### > Documentation and quantification

Q9 Alliance Touch is ideal for both documentation and quantification. The complimentary license-free software NineAlliance's fantastic ease of use is ideal for multi-user environments. Image editing, enhancement, and analysis available at all times and extremely easy to use. Advanced Uviband software could complete your scientific imaging package for sophisticated analysis and datable storage of analysed results.

### > Chemical attraction

- Chemiluminescence, bio-luminescence, fluorescence and visible
- Multiplexing and bio fluorescence ready
- Quantification and documentation
- Gene expression, protein expression; RNA/DNA assay, colonies
- In vivo by luciferase
- RGB Led equipped
- Optional in vivo by RFP/GFP
- Optional IR/NIR Chroma to image any blot conjugated with any dyes available on the market from Invitrogen, GE Life Science, Thermo Pierce, Sigma, Millipore, Promega, Licor
- Optional customisable multiplexing



CHEMILUMINESCENCE  
 BIOLUMINESCENCE  
 RGB LED BY DEFAULT  
 OPTIONAL UV FLUORESCENCE  
 FLUORESCENCE ON WESTERN BLOTS :  
 OPTIONAL IR/NIR CHROMA  
 OPTIONAL CUSTOMISABLE MULTIPLEXING



\*Picture not contractual  
 New design coming soon

## SENSITIVITY AND RESOLUTION

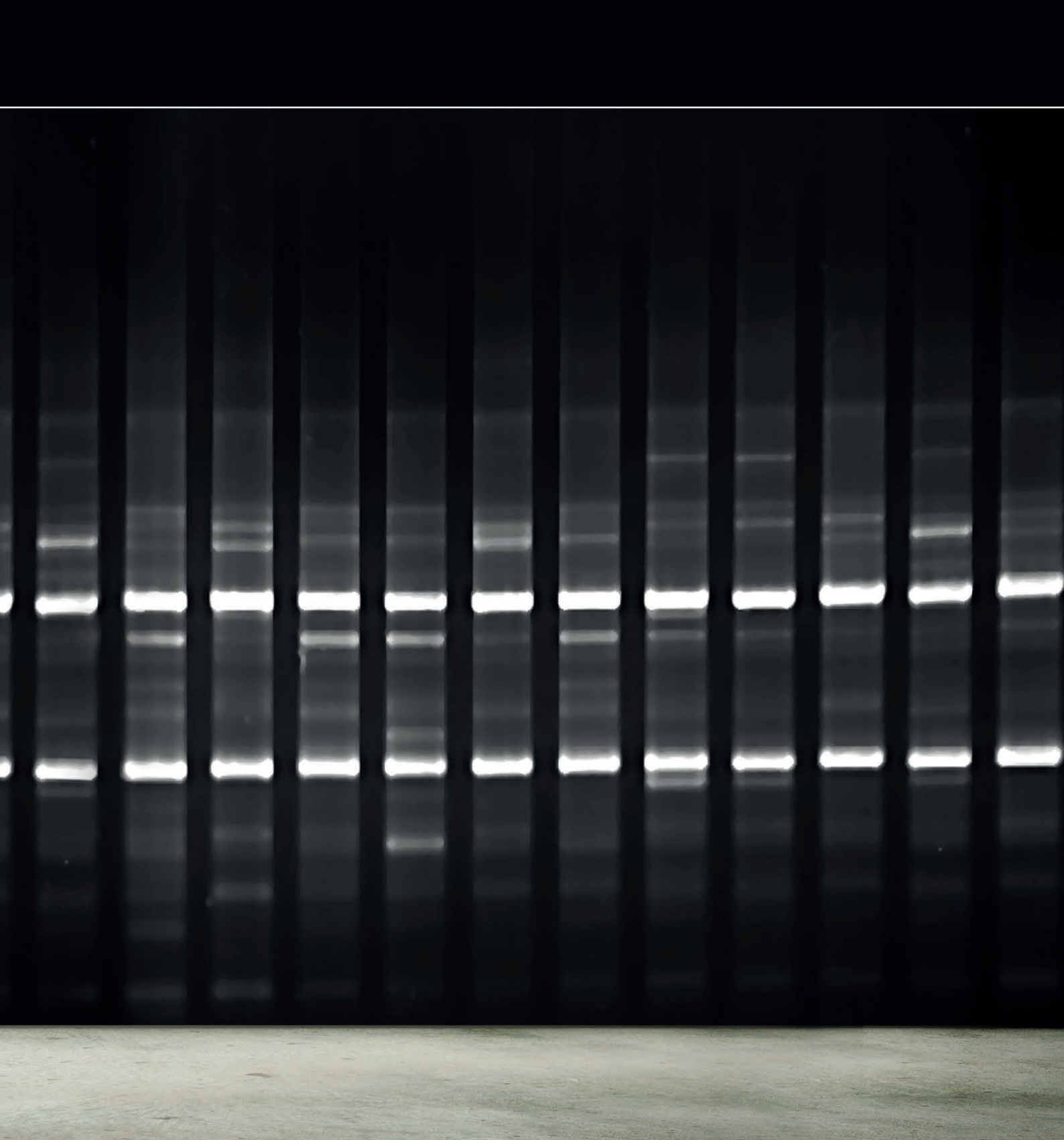
### > State of the art

- Super 9.2-megapixel native resolution camera
- 16-bits depth (65,535 shades of gray)
- Dynamic range 4.8OD
- Extreme sensitivity
- RGB led include
- Optional customisable multiplexing
- Design dedicated to Western blot detection and quantification
- Extreme resolution
- Extremely low noise
- Scientific grade CCD camera
- Electronically variable shutter speed
- Cooling 3-stage Peltier -60°C regulated for the lowest noise
- Extremely bright fixed lens,
- Auto-exposure, manual or serial modes available
- Autofocus
- Compact design
- 35x35cm footprint
- No maintenance required
- Black body imaging
- Easy to use software
- Robust steel and stainless steel construction
- Advanced Uviband software available
- Direct access to Key functions
- Multi user capability
- Good laboratory practice (GLP) files
- One touch fully automated image acquisition programme
- IQ/PQ/OQ procedures available
- Very large aperture F0.80
- 4-position filter wheel motorised
- SSD internal Drive
- Huge TFT touch screen,
- Wifi and networkable



**UVITEC**  
CAMBRIDGE





## GEL IMAGING

Fluorescence and colorimetric samples

- **Platinum V10**
- **FireReader V10**
- **Essential V6**
- **Uvidoc HD6**

## The upgradable power gel documentation

Massive specifications

“ We have invested in the Platinum V10 system for our day to day Ethidium Bromide gels, with the intention to gather funds this year in order to upgrade the system to chemiluminescence imaging “

### > Unrivalled specifications

- **Highest resolution**

The Platinum V10 provides an unrivalled native camera resolution for fluorescence and visible applications.

- **Interchangeability**

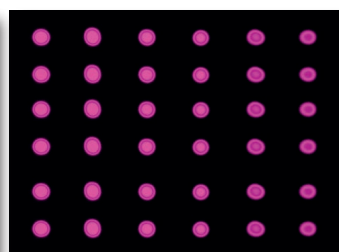
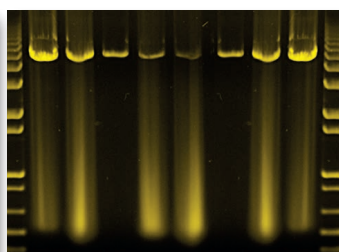
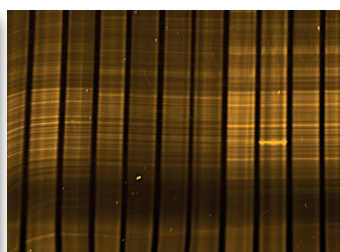
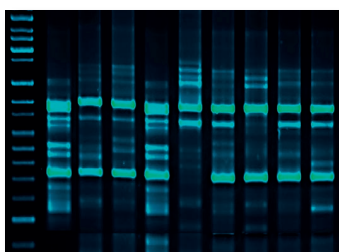
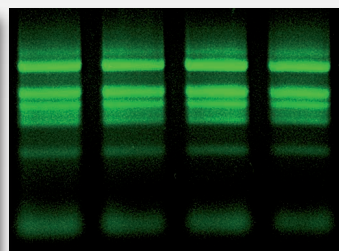
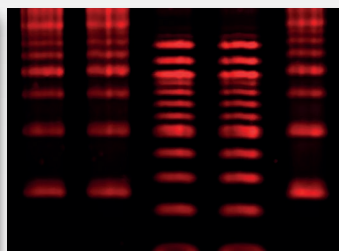
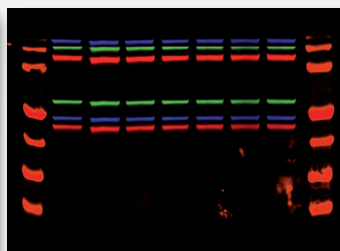
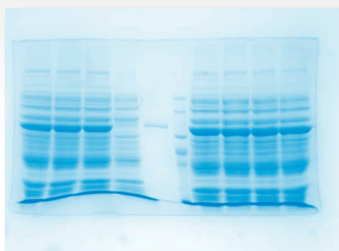
Platinum V10 features an impressive plug-and-play interchangeable transilluminator system allowing to switch tables or integrate our unrivalled Chroma epi-fluorescence module capable of detecting blots excited in various wavelengths: Blue, Green, Red/NIR.

- **Upgradability to chemiluminescence**

Uvitec has specifically design Platinum V10 darkroom so it may be easily upgraded to a true chemiluminescence imaging system by just changing the camera and optics on site, and ensuring total lightproofness is conserved.

- **6 megapixels native camera**

Platinum's high-resolution imaging enables the user to see more details on their gels and considerably improves analysis accuracy.



### > The soft touch

- **Make a point...**

Highlight important features with text and symbols. Platinum helps you annotate and illustrate your images. Save the text as a template and apply the same template to another image.

- **Need to quantify and measure?**

Just add a calibration marker for reference or measure the volumes to determine the quantity with our simple 1-2-3 approach.

- **WYSIWYG: What you see is what you get**

Our live preview mode ensures quick and easy sample positioning and fine focus.

- **Set-up quickly**

Start with a predefined set-up and then optimise it for your particular technique. Name it, save it and simply load it back next time.

- **Make it even better**

Enhance images with the extensive set of tools including multi-colored channels, cropping and many more.

- **Pick 'n' mix**

Platinum is available in several possible configurations so as to meet your budget and applications-set: standard UV table, patented-technology Uvipure special-filtered transilluminator allowing EtBr and most safe stains to be run, inclusive of white light conversion screen or not...



UV FLUORESCENCE  
UPGRADABLE TO CHEMILUMINESCENCE  
OPTIONAL CHROMA FLUORESCENCE



## A PLATINUM JEWEL

### > The WOW list

- Highest performance gel doc systems available
- 6-megapixel resolution extendable to 10 megapixels
- Scientific sensor
- Massive 16-bit pixel depth (65,535 shades of gray)
- Protocol-driven image acquisition
- Auto-exposure
- Autofocus with motorized zoom option
- Focusing gauge for precise focusing
- Extreme sensitivity for the faintest fluorescence sample
- Dynamic range up to 4.8 orders of magnitude
- Scientific optics
- Patented Uvipure technology available
- Superb quality camera filter optimised for Ethidium Bromide
- 'One-touch' fully automated image acquisition programme
- Single or dual wavelength transilluminator
- Several epi-illumination options
- Customize your own applications with a wide variety of transilluminators and options
- Compact design
- Roll-out transilluminator
- Direct access to key functions
- Multi-user capability
- Good Laboratory Practice (GLP) file
- Protocol-driven image acquisition
- Inclusive of free Uvitec-1D software for both image acquisition and analysis
- More than 90 functions
- Publishing & image enhancement features
- Advanced UVband software available
- Ideal for DNA, RNA and protein gels

# FIREREADER V10

## Expand your territories

Scientific high end gel doc camera

“ We have realised the importance of resolution and pixel depth when doing quantification. We are impressed by the fantastic results we obtain with our FireReader system. All our images are optimised for quantification and quick to take, saving us a lot of time. ”

### > Light your fire

#### • 16-bit depth camera

FireReader V10's high resolution specifications boast the highest performance camera available for gel documentation. Based on a 16-bit pixel depth, the camera's superb quality offers pictures with up to 65,535 grey levels that enrich your research level data.

The dynamic range of up to 4.8 orders of magnitude gives users greater confidence when imaging even the most difficult fluorescent samples.

#### • Documentation and quantification

FireReader V10 is ideal for both documentation and quantification. Thanks to our proprietary technology, its superb 6-megapixel native resolution can be extended to 10 megapixels for the most resolution-demanding applications.

### > Visualize in 3D, Capture, edit, analyse

FireReader V10 is a new concept of Gel imaging acquisition: fully automatic (light, lens, focus, zoom), you just need 1 click to take the best picture.

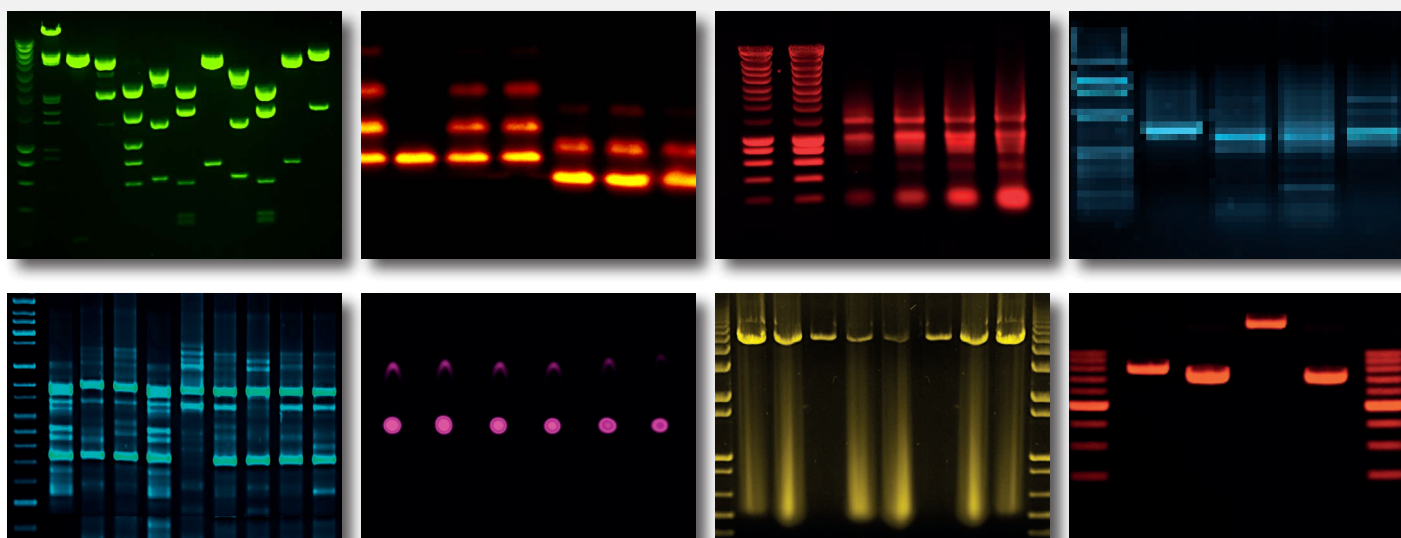
Uvitec-1D software is easy to use and sophisticated enough to allow ultra-precise optimisation when capturing the image. With, for instance, a live-3D view to set up the exposure time and control the saturation and ensure that all bands are quantifiable. You can also decide to select the efficient “auto-exposure” mode for a safe and rapid image acquisition and use the editing options of the software to enhance the image, annotate, archive and analyse.

#### • Image acquisition and quantification

Images may be enhanced in a great number of ways including contrast and brightness adjustment, mirror imaging, image inversion and annotation (text and symbols). Displayed images can be converted into several colour scales (red, blue, green and multi-coloured palette) without affecting the data before being analysed to determine molecular weight and optical density.

### > Chemical attraction

- Fluorescence & visible
- Epi-blue LED fluorescence for safe dyes applications and epi-blue fluorescence on blots
- Quantification & documentation
- Gene expression, protein expression. RNA/DNA assay, colonies, safe gels, GFP, FITC, CY2...
- Open to most dyes available on the market from Invitrogen, GE Life Science, Themor Pierce, Sigma, Millipore, Promega



UV FLUORESCENCE  
 EPI-BLUE FLUORESCENCE (GFP, FITC...)  
 VISIBLE IMAGING  
 OPTIONAL EPI-UV (TLC, QDOTS...)



## THE HOT LIST

### > Push the button

- Extreme sensitivity for the faintest fluorescence sample
- Scientific camera with massive 16-bit pixel depth (65 535 grey levels)
- Suitable for both routine documentation & critical quantitative applications
- 6-megapixel native camera resolution and up to 10-megapixel image resolution.
- Auto-exposure
- Autofocus with automatic zoom and light system
- Optional epi-UV 365nm for TLC applications, Qdots...
- Ideal for DNA, RNA and protein gels and safe gels
- Patented Uvipure technology available
- Dynamic range up to 4.8 orders of magnitude
- Suitable for both routine documentation and critical quantitative applications
- 6-position filter wheel. Up to 12 custom filters available.
- USB 3.0 ports available for fastest connection/transfer
- “One-touch” fully automated image acquisition programme
- Inclusive of free Uvitec-1D software for both image acquisition and analysis
- Several choices of transilluminator (single, dual wavelength, special Uvipure technology ...)
- UV safety switch and override button
- Advanced UVband software available

# ESSENTIAL V6

## All you need is me

Simple and fast image acquisition

“ We do a lot of routine documentation and we need a robust and easy to use instrument. Our Essential is an all-inclusive system for the price of a basic one. Autofocus, auto-exposure, quantification software, 16bits, all included. ”

### > Capture and print

#### • Affordable Scientific gel doc

Essential V6 is as superbly suited to simple, rapid capture and print applications as it is to high precision image optimisation and capture. It is therefore ideal for research environments with a high number of occasional or frequent users, or for the dedicated single user who needs complete control over image capture and analysis. The Essential V6 specifications are ideal for routine documentation.

#### • Efficient and multi-User

The cutting edge Essential V6 camera and optics deliver the highest scientific imaging grade possible for the most demanding applications. The system is ideal for a multi-User environment with limited set-up functions but covering a maximum of applications.

### > Capture and print

In research laboratories where premium quality and precision are required Essential V6 comes into its own.

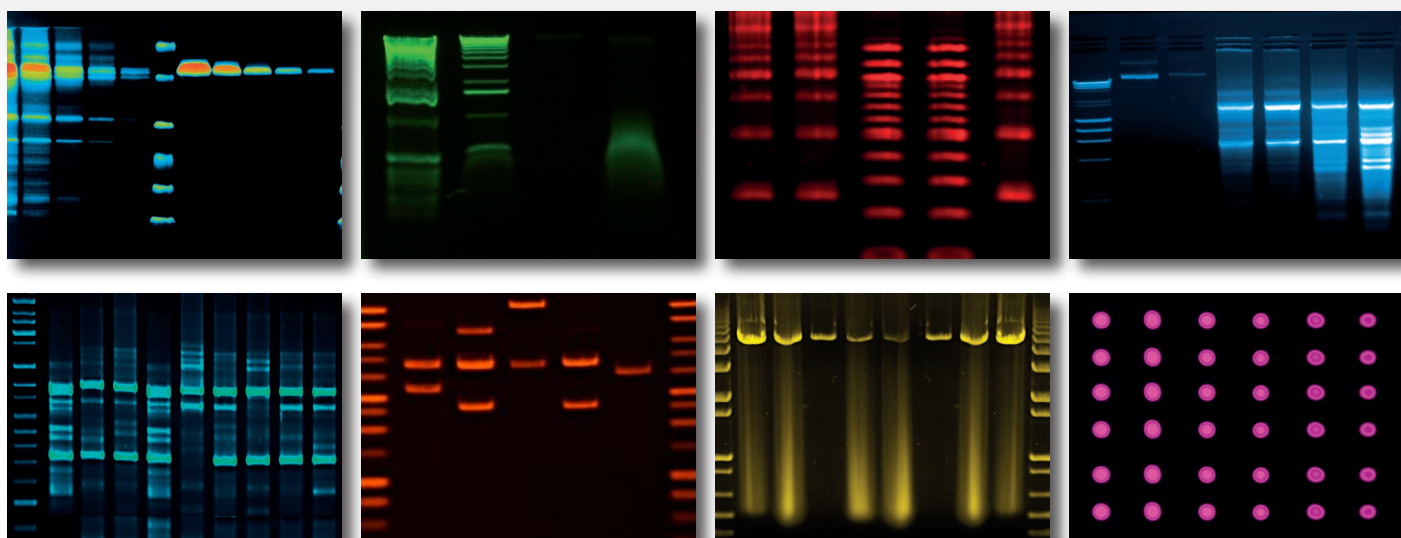
Essential V6 is ideal for routine documentation. European manufactured, the superb quality of the scientific camera enables long lasting high performance imaging. With no learning curve and only one button to click, a high quality print or image file can be produced in seconds. Automatic features such as autofocus, automatic light system, automatic zoom and auto-exposure enable the highest precision image optimisation and the saturation easy monitoring.

### > Tough hardware

Essential V6 features the most robust darkroom cabinet available. Transilluminator can easily and fully be slid out. The darkroom can accommodate either a standard transilluminator or our highly demanded UVIpure transilluminator.

### > Set the tone

Uvitec-1D software is designed for simplest and fastest image acquisition while still allowing users to improve tiff-saved images whenever necessary in a number of ways including contrast and brightness adjustment, mirror imaging, image inversion and annotation (text and symbols)... Displayed images can be converted into several colour scales (red, blue, green and multi-coloured palette) without affecting data before analysis and thus in order to determine molecular weight and band quantities (optical density).



UV FLUORESCENCE  
(ETBR & SAFE STAINS GELS)  
VISIBLE IMAGING



## FULFIL YOUR ESSENTIAL NEED

### > The cherry on the cake

- Ideal for quantification and routine documentation
- Scientific camera of 3-megapixel native resolution
- True 16-bit depth camera with up to 65,535 shades of gray
- Patented Uvipure technology available
- UV safety switch and override button
- Extreme ease of use
- Auto-exposure
- Autofocus with automatic zoom and light
- USB connection
- Ideal for multi-user environments
- Good Laboratory Practice (GLP) file available at all times
- Inclusive of free Uvitec-1D software for both image acquisition and analysis
- Robust steel and stainless steel manufacturing
- Compact design
- Protocol-driven image acquisition
- Direct access to key functions
- Publishing & image enhancement features
- Superb quality camera filter optimised for Ethidium Bromide
- Copy the image to clipboard and paste either in Microsoft Word® or Excel®

# UVIDOC HD6

## The all-inclusive stand-alone

The stand-alone system with computer performance

!! *We are pleased that this 16-bit imaging system offers excellent network connectivity which prevents ethidium bromide contamination of our PC. The interface is very user-friendly and colourful. Uvidoc offers excellent imaging capabilities.* !!

### > No more queues for documentation

Many laboratories have already discovered the benefits of Uvidoc's speed and simplicity. With no learning curve and only a few buttons to press a high quality printout or a saved image can be produced in seconds, making darkroom queuing a thing of the past.

The safety speed and robustness of Uvidoc HD6 have even made it an essential tool in many teaching laboratories, the ultimate multi-user environment!

Uvidoc HD6 Touch is a superbly designed documentation system featuring a unique combination of simplicity and versatility. Made of a true internal SSD drive, the Uvidoc HD6 cannot be compare with fragile tablet gel doc system! It operates as a stand-alone unit for producing high quality megapixel images. These can be easily saved on a USB drive or transferred to a computer via the network LAN.

### > USB drive, WIFI and network capabilities

A unique feature of the UVIDOC HD6 is its IP internet capability enabling connection of the system to your lab network. Perform your acquisitions on-site then download images from the comfort of your office thanks to the easy-share network connection and the huge Uvidoc internal memory. This could protect your office from ethidium bromide contamination.

Alternatively, the image can be saved onto your USB key for future transfer to your computer.

### > Technology with simplicity

The unique 16-bit and 3-megapixel camera delivers outstanding performances as well as a low signal-to-noise ratio producing perfect imaging for both quantification and publication.

Uvidoc HD6 incorporates the most efficient and versatile darkroom cabinet available.

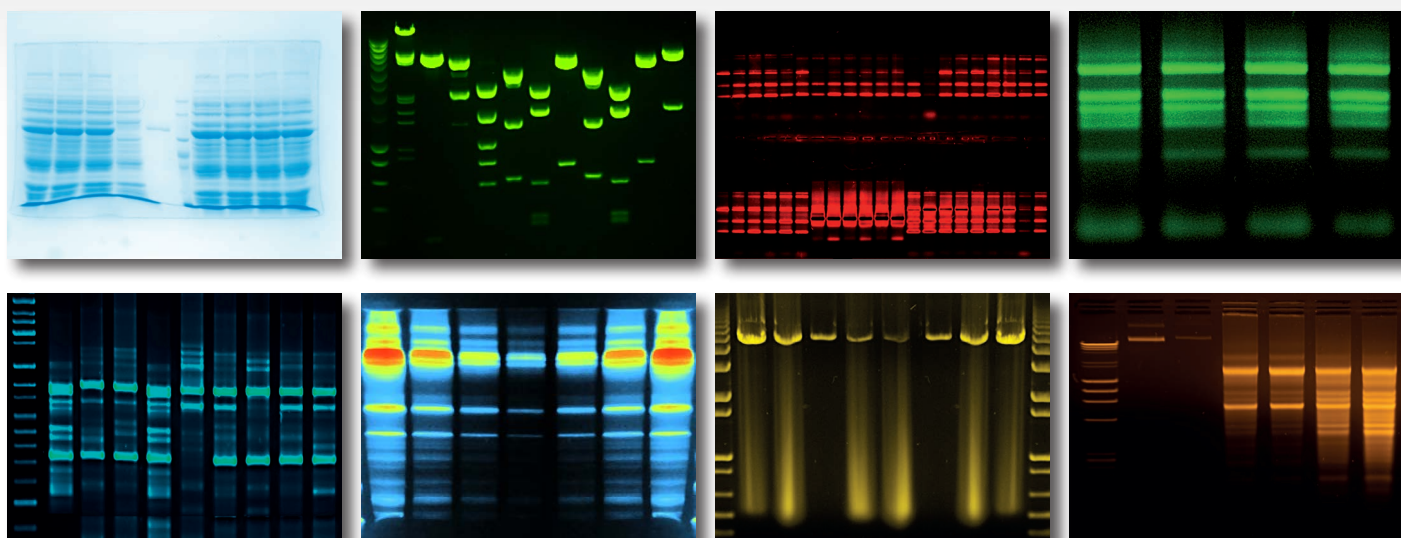
The transilluminator is fully enclosed but can be pulled out easily on a movable tray to allow visual examination of the gel and band extraction.

The saturation monitoring of live image ensures that fully quantifiable images are captured at all times.

The built-in digital monitor allows convenient and comfortable preview of images with a very simple and elegant user interface.

### > Complimentary Uvitec-1D software

The complimentary license-free Uvitec-1D software provides a comprehensive set of image enhancement, editing and analysis tools, from molecular weight to quantification.



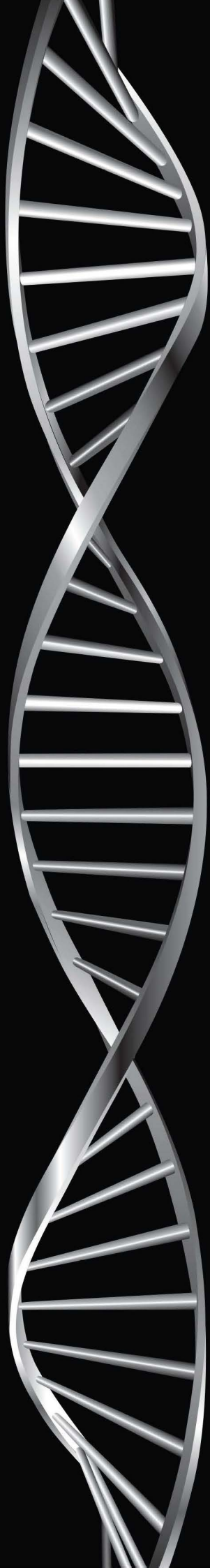
**UV FLUORESCENCE  
(ETBR & SAFE STAINS GELS)  
VISIBLE IMAGING**



## SUNSHINE IN YOUR LAB

**> Cutting edge performance**

- Simplicity and versatility
- Stand-alone: no additional computer required
- Ideal for multi-user environments
- All the flexibility of an instant imaging system
- 3-megapixel native camera resolution
- 16-bit pixel depth delivering up to 65,535 shades of gray
- Suitable for both routine documentation & critical quantitative applications
- Saturation monitoring of live images to ensure they are fully quantifiable
- Luxury roll-out transilluminator with protection cover
- UV safety switch and override button
- Patented Uvipure technology available
- Robust steel and stainless steel construction
- Up to 8 USB ports (flash drives, thermal printers, mouse and keyboard...)
- Auto-exposure
- Fully networkable allowing easy image transfer to a PC
- On-board computer
- 12.2" high-end HD touch screen with top-quality 16/9 LCD panel
- 3-position filter wheel
- Optimised, proprietary F-590 EtBr emission filter included
- White light epi-illumination LED panels
- License-free Uvitec-1D software included, for both image enhancement, editing and analysis



*Uvitec is a leading molecular biology imaging systems manufacturer, founded in 1996 and based in Cambridge UK. With a strong focus on DNA, RNA and proteins, we design and manufacture state-of-the-art imaging systems for Chemiluminescence, Fluorescence and Western Blot applications for the Life Science Research and Biochemistry industries.*

*Every month, we produce dozens of top-quality Gel Documentation and Chemiluminescence systems for clients all over the Globe through a network of over 40 valuable partners worldwide.*

*We strongly believe in innovation and excellence in order to provide industry specialists with unique, irreproachable systems they can trust and rely on at all times.*

*Quality, sustainability and full satisfaction are our top priorities and all we undertake is encompassed within this objective.*

## **CONTACT**

Uvitec Limited  
Unit 3.05, St John's Innovation Centre  
Cowley Rd  
Cambridge  
CB4 0WS  
United Kingdom  
T. +44 (0) 1223 421270  
T. +44 (0) 1223 421271  
E-mail. [uvi@uvitec.co.uk](mailto:uvi@uvitec.co.uk)

[WWW.UVITEC.CO.UK](http://WWW.UVITEC.CO.UK)