

Staining Machine MSM

The most universal unit
easy to operate



Microtomes

Cryostats

Paraffin

Embedding Centers

Tissue processors

Stainers

▶ **MSM**

MAS

Cover slipper

Knife sharpener

Floating bath

Slide warmer

Staining Machine MSM

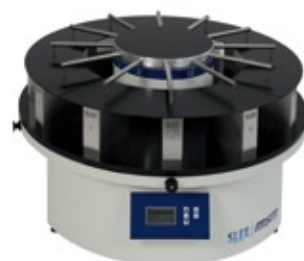
The most universal unit
easy to operate

Universal unit with reduced staining time for better stain reproducibility.
Usable for histology and cytology.

- ▶ Up to 1150 slides per hour
- ▶ 10 staining programs, free programmable
- ▶ Display and operating panel with programming keys
- ▶ LCD display with 4 lines and only 5 operating keys, free programmable
- ▶ Possibility to store up to 10 programs with individual rest and dripping time for all baths
- ▶ Display of active baths and remaining time
- ▶ Possibility of a start delay of up to 99 hours
- ▶ All exterior parts are powder coated in RAL 9002
- ▶ Cuvette locking made of black PVC
- ▶ 12 stainless steel cuvettes, 150 x 50 x 120 mm, 400 ml content
- ▶ 1 transport basket is included, its capacity is 40 standard size micro slides (20 or 50 optional), standard size 76 x 26 mm
- ▶ Rear connection possibility for hose (100 mm dia.)
- ▶ Electronic control with multi power supply 100 – 240 V, 50/60 Hz (worldwide operation without power adjustment)
- ▶ In case of power failure the basket is moved to a programmable position
- ▶ Stainless steel baskets for receiving the micro slides. They will be filled outside and then closed with a snap lock. Filled baskets can now be loaded to the receiving arms provided
- ▶ Lifting unit for lifting and lowering loaded baskets and closing lids available for each cuvette
- ▶ Rotation unit moves all cuvettes in programmed sequence
- ▶ Optional:
 - 24 cuvettes
 - Perspex hood for covering moveable equipment parts during operation and as suction hood for stopping bad odours, (side opening for container loading)
 - Exhaust fan
 - Exhaust fan carbon filter
 - Up to 7 transport baskets with continuous staining

SLEE

MAINZ



MSM during staining



Cuvettes with transport basket



Transport basket for slides



Ergonomic operating panel

(Specifications are subject to change without notice)

SLEE MEDICAL GMBH

P. O. Box 10 05 07
D-55129 Mainz · Germany

Fon +49 (0) 6131/95871-0
Fax +49 (0) 6131/95871-0

mail@sleemainz.com
www.sleemainz.com

Weight and Dimensions

Dimensions (in mm)

Dimensions packed (in mm)

Depth x Width x Height

870 x 870 x 700

1030 x 980 x 800

Weight net

80 kg

Weight packed

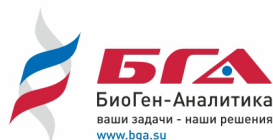
140 kg

Electrical parameters

Art.-No. 12000200 230 V / 50Hz

Art.-No. 12000201 230 V / 60Hz

Please ask for other units for Histopathology and consumables as well as laminar flow equipment.



ООО «БиоГен-Аналитика»

115093, Москва, Партийный пер., д.1, корп. 58, стр.1
тел./факс: +7 499 704 62 44
e-mail: 84997046244@bga.su
www.bga.su